

ORIGINAL PAPER

Open Access



# Study of biaxial mechanical properties of the passive pig heart: material characterisation and categorisation of regional differences

Fulufhelo Nemavhola

## Abstract

Regional mechanics of the heart is vital in the development of accurate computational models for the pursuit of relevant therapies. Challenges related to heart dysfunctioning are the most important sources of mortality in the world. For example, myocardial infarction (MI) is the foremost killer in sub-Saharan African countries. Mechanical characterisation plays an important role in achieving accurate material behaviour. Material behaviour and constitutive modelling are essential for accurate development of computational models. The biaxial test data was utilised to generate Fung constitutive model material parameters of specific region of the pig myocardium. Also, Choi-Vito constitutive model material parameters were also determined in various myocardia regions. In most cases previously, the mechanical properties of the heart myocardium were assumed to be homogeneous. Most of the computational models developed have assumed that the all three heart regions exhibit similar mechanical properties. Hence, the main objective of this paper is to determine the mechanical material properties of healthy porcine myocardium in three regions, namely left ventricle (LV), mid-wall/interventricular septum (MDW) and right ventricle (RV). The biomechanical properties of the pig heart RV, LV and MDW were characterised using biaxial testing. The biaxial tests show the pig heart myocardium behaves non-linearly, heterogeneously and anisotropically. In this study, it was shown that RV, LV and MDW may exhibit slightly different mechanical properties. Material parameters of two selected constitutive models here may be helpful in regional tissue mechanics, especially for the understanding of various heart diseases and development of new therapies.

**Keywords:** Mechanical properties, Constitutive modelling, Cardiac mechanics, Anisotropy, Biaxial testing, Constitutive material parameters, Fung model

## Introduction

Globally, cardiovascular diseases are posing challenges to public health (Roth et al., 2017). In sub-Saharan Africa, these diseases remain problematic since the majority of the population are adversely affected (Boateng, Agyemang, Beune, et al., 2018). Challenges related to heart dysfunctioning are the most important sources of

mortality in the world. For example, myocardial infarction (MI) is the foremost killer in sub-Saharan African countries (Boateng, Agyemang, Kengne, et al., 2018). Mechanical characterisation is important in achieving accurate material behaviour. The understanding of biomechanical properties of soft tissue plays a vital role in the development and application of computational models for various diseases (Nemavhola, 2017a, 2019a; Masithulela, 2016a, b; Ngwangwa & Nemavhola, 2020). It may also lead to accurate comprehension of different disease mechanisms such as MI. The precise

Correspondence: [masitfj@unisa.ac.za](mailto:masitfj@unisa.ac.za)

Unisa Biomechanics Research Group, Department of Mechanical and Industrial Engineering, School of Engineering, University of South Africa, Florida, Johannesburg, South Africa



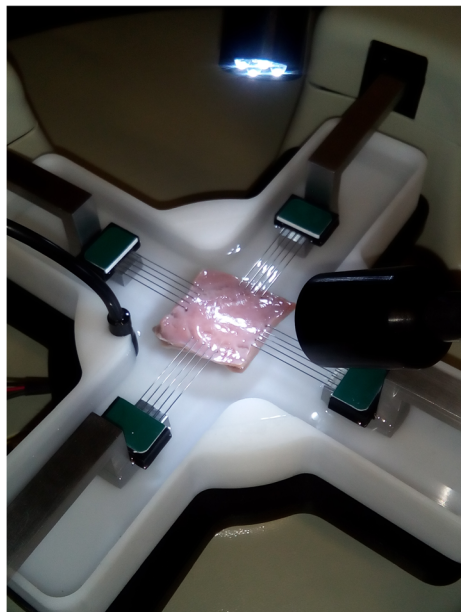
© The Author(s). 2021 **Open Access** This article is licensed under a Creative Commons Attribution 4.0 International License, which permits use, sharing, adaptation, distribution and reproduction in any medium or format, as long as you give appropriate credit to the original author(s) and the source, provide a link to the Creative Commons licence, and indicate if changes were made. The images or other third party material in this article are included in the article's Creative Commons licence, unless indicated otherwise in a credit line to the material. If material is not included in the article's Creative Commons licence and your intended use is not permitted by statutory regulation or exceeds the permitted use, you will need to obtain permission directly from the copyright holder. To view a copy of this licence, visit <http://creativecommons.org/licenses/by/4.0/>.

understanding of the mechanical behaviour of the heart myocardium in different regions of the heart may assist in the development of accurate constitutive models. This may lead to the development of new therapies and also to the improvement of current therapies. The passive and active properties of heart walls play a pivotal role in understanding its pathophysiological and physiological functions. This could be utilised in the development of accurate and successful surgical procedures as well as in the full development of medical devices and their optimum design, including the design of prostheses (Martinsson et al., 2019; Stavropoulou et al., 2009). For most cardiovascular diseases, especially congenital heart disease, the evolution in the development of accurate and patient-specific computational models could assist in accurate predictive conditions (Masithulela, 2015a, 2016a; Gallo et al., 2019; Yu et al., 2019; Nordbø et al., 2014; Nemavhola, 2019b).

In most cases previously, the mechanical properties of the heart myocardium have been assumed to be homogeneous in the development of computational models to determine the global functioning of the heart (Nemavhola, 2017a; Masithulela, 2015b, 2016b, c). It has been clearly demonstrated that the mechanical properties of adult ventricles are different from neonatal porcine ventricles (Ahmad et al., 2018). Following the same logic, the mechanical behaviour of various regions in the pig heart may exhibit different stiffness. Furthermore, in most publications, it has been assumed that material properties of rested hearts in various regions, including LV, MDW and RV have the same mechanical properties.

Most authors have considered or studied the mechanical behaviour of the LV (Masithulela, 2016b) and RV or both (Masithulela, 2016b; Ahmad et al., 2018). These material properties are then used to develop computational models in understanding various disease mechanisms, including MI. The development of therapies could be achieved by using computational models that have the ability to precisely estimate the regional stresses and strains of tissues (Kural et al., 2012). The assumption that heart tissue has the same material properties might not be accurate and if this is the case, the accuracy of computational models could be affected.

Overall, the data for an accurate constitutive model of the MDW remains scarce. The objective of this study was to validate the constitutive model suitable for three heart regions, namely the RV, LV and MDW of the pig heart. This was done systematically by quantifying the material properties of these regions. To achieve this, biaxial tests were performed on the four samples from all three regions of the pig heart. Circumferential and longitudinal loads were performed on the sample. The biaxial testing allowed a study of the effect of applying one load in circumferential direction to the longitudinal direction. To evaluate relevant material parameters for a suitable constitutive model, the average stress-strain curve of the RV, LV and MDW was determined. The comparison of material parameters obtained from two suitable constitutive models is made between the MDW, LV and RV. In addition, these material parameters may be utilised for the development of accurate computational models for studying mechanisms of various cardiovascular diseases.

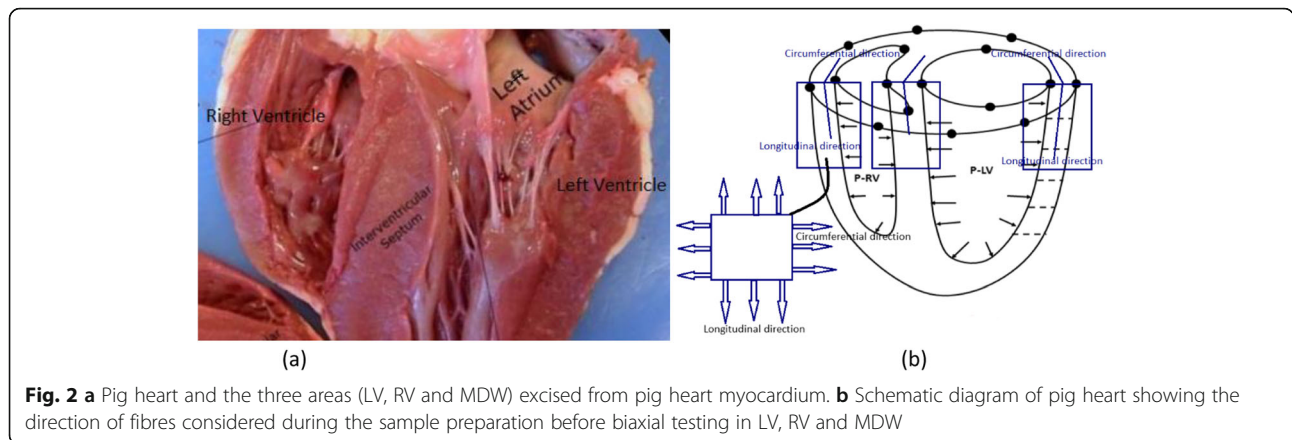


(a)



(b)

**Fig. 1** Biaxial testing equipment (Biotester CellScale®) used for testing resting pig heart myocardium



**Materials and methods**

**Material preparations**

To achieve the objectives of this study, a local abattoir was contacted to supply four fresh mature porcine hearts from pigs weighing about 104 kg. The collected porcine hearts were collected immediately after slaughter and were stored in ice-cooled boxes at 4 °C during transportation to the biomechanics lab. All the samples were dipped into 0.6% glutaraldehyde for 20 min before testing. To ensure accurate experimentation, the porcine hearts were visually inspected for any structural damage before testing. The FSN coordinate system was virtually inspected by looking at the mean-fibre direction (F), the sheet axis direction (S) and the sheet normal direction (N) (Dokos et al., 2002; Sommer et al., 2015). The samples were dissected into various regions including LV, RV and septal wall. To conduct the biaxial testing, the ventricles were cut into 18 × 18 mm<sup>2</sup> pieces using a squared-shaped cutting punch. All procedures followed the NIH guidelines for the Guide for the Care and Use of Laboratory Animals.

**Methods**

Due to the irregular thickness of the myocardium of the pig heart, the thickness was measured by ensuring that at least four measurements were taken at various points of the selected sample. For an accurate reading, the four readings taken were then averaged to obtain the average thickness of the myocardium. The load cell of 23 N was used in a CellScale biaxial testing machine. A saline solution was used to keep the sample fresh. Also, the saline solution in the bath was allowed to warm up to 37 °C before any test was conducted. To utilise image tracking, the samples were soaked for 15 min in the warm saline bath and then taken out during testing. This was done so as not to compromise the quality of image tracking. The samples were tested using the procedure as described by Ahmad et al. (2018). The image acquisition frequency used in this experiment was 5 Hz.

**Biaxial tensile testing equipment**

To capture the biomechanical properties of the passive heart tissue, CellScale biaxial equipment was used (Fatemifar et al., 2019; Kramer et al., 2019; Anssari-

**Table 1** Material parameters ( $c, b_1, b_2, b_3, b_4, b_5, b_6$ ) of fitted Fung model Eq. (9) on right ventricle (RV) of porcine myocardium including model fit ( $R^2$ ) and anisotropy ( $A$ ) of the same myocardium

	Sample 1 (RV)	Sample 2 (RV)	Sample 3 (RV)	Sample 4 (RV)
$c$ (kPa)	3.661	2.998	3.078	1.565
$b_1$	1.999	1.781	1.270	2.000
$b_2$	4.244	2.452	2.054	4.207
$b_3$	1.551	1.228	1.176	1.22
$b_4$	0.199	1.791	1.495	1.342
$b_5$	0.598	-0.002	0.585	1.0106
$b_6$	0.689	0.767	0.0001	0.004
Anisotropy ( $A$ )	0.612597	0.817663	0.757276	0.59333
Fit ( $R^2$ )	0.948047	0.971855	0.993354	0.991887

**Table 2** Material parameters ( $c$ ,  $b_1$ ,  $b_2$ ,  $b_3$ ,  $b_4$ ,  $b_5$ ,  $b_6$ ) of fitted Fung model Eq. (9) on left ventricle (LV) of porcine myocardium including model fit ( $R^2$ ) and anisotropy ( $A$ ) of the same myocardium

	Sample 1 (LV)	Sample 2 (LV)	Sample 3 (LV)	Sample 4 (LV)
$c$ (kPa)	2.019	3.799	4.242	3.830
$b_1$	1.310	1.986	1.203	1.462
$b_2$	3.425	1.990	1.991	2.331
$b_3$	0.660	0.834	0.660	0.660
$b_4$	3.201	4.101	1.370	2.505
$b_5$	1.600	1.717	0.709	1.600
$b_6$	1.362	2.026	0.582	1.043
Anisotropy ( $A$ )	0.482	0.999	0.703	0.710
Fit ( $R^2$ )	0.993	0.994	0.993	0.993

Benam et al., 2019) (see Fig. 1). The frequency of 10 Hz was used in capturing the force displacement data during biaxial stretching of the myocardium. One sample in each region was cut and the thickness of each sample was measured using a Vernier calliper. All the measurements taken on the sample were recorded to further determine the overall thickness of each sample. Forty percent strain was then applied to the myocardium while measuring the force and displacements. The allocated load cell of 23 N measured the force in each direction independently (Nemavhola, 2017b). To ensure the accuracy of the fibre direction in the heart myocardium, careful inspections were done to ensure that samples were cut accordingly. Additionally, all the RV, LV and MDW regions were cut into equal pieces of  $20 \times 20 \text{ mm}^2$  (Fig. 2).

#### Data analysis

The mechanical properties of the passive myocardium of porcine hearts in the LV were quantified and compared to those in the RV and MDW regions. Using the Fung and Choi-Vito models, the anisotropic of the materials was calculated using Eq. (13). Stress and strain were determined by using Eqs. (10) and (2),

respectively. Equation (3) was then used to determine the cross-sectional area of the tested myocardium in different passive heart regions. In order to satisfy all conditions, Eqs. (13) and (14) were used (Bellini et al., 2011; Aydin et al., 2017). In this study, the constitutive model fitting was done using the Hyperfit software designed for experimental data fitting of hyperelastic materials (de Bortoli et al., 2011). The data analysis on this paper is similar to what was presented previously (Ndlovu et al., 2020).

#### Development of constitutive models

##### Stress and strain

To calculate the stress on the tested tissue, the constant cross-sectional area was assumed to be true. The measured force  $F$  was used to calculate the stress applied in the cross-sectional area  $A$  of the tissue. Therefore, the stress was calculated as follows:

$$\sigma_i = \frac{F_i}{A_i} \quad (1)$$

The strain  $\epsilon$  was calculated by the following relationships:

**Table 3** Material parameters ( $c$ ,  $b_1$ ,  $b_2$ ,  $b_3$ ,  $b_4$ ,  $b_5$ ,  $b_6$ ) of fitted Fung model Eq. (9) on interventricular septum (MDW) of porcine myocardium including model fit ( $R^2$ ) and anisotropy ( $A$ ) of the same myocardium

	Sample 1 (septum wall)	Sample 2 (septum wall)	Sample 3 (septum wall)	Sample 4 (septum wall)
$c$ (kPa)	1.622	4.036	4.071	1.491
$b_1$	2.000	1.200	1.236	1.200
$b_2$	4.114	2.092	2.139	3.081
$b_3$	1.186	1.064	1.220	1.094
$b_4$	1.628	0.793	0.110	2.125
$b_5$	0.197	0.019	0.0001	0.600
$b_6$	0.598	0.323	0.169	0.001
Anisotropy ( $A$ )	0.601	0.717	0.731	0.549
Fit ( $R^2$ )	0.987	0.989	0.977	0.991

$$\epsilon = \frac{\Delta l}{l_o} = \frac{l_i - l_o}{l_o} \tag{2}$$

$$A_i = t_i l_i \tag{3}$$

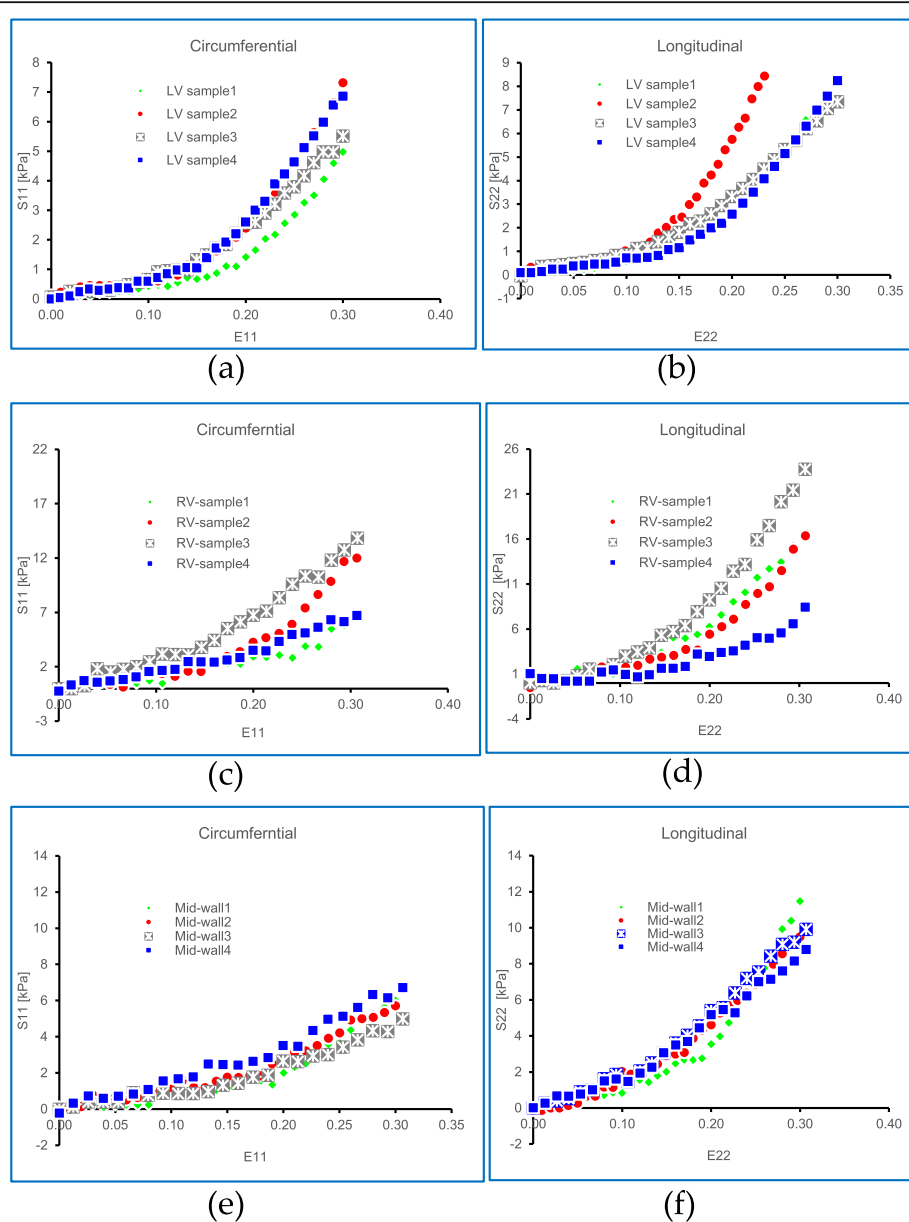
deformation was  $dx_1$  and  $dx_2$ . The change in scalar product of the two elemental vectors involves a change in length and angle between the two vectors. The material vectors of spatial scalar product  $dx_1, dx_2$  can be found as follows:

$$dx_1 \cdot dx_2 = dX_1 \cdot C dX_2 \tag{4}$$

**Strain field**

Strain is regarded as the general measure of deformation in a material subjected to applied force. The scalar product of the two elemental vectors  $dX_1$  and  $dX_2$  after

where  $C$  represents the right Cauchy-Green deformation



**Fig. 3** Experimental data of stress-strain curves was calculated using using Eq. (1) and strain was calculated using Eq. (2). Stress-strain  $r$  LV samples in the **a** sheet direction and **b** normal direction of the cut piece of the pig heart myocardium. Stress-strain curve for four RV samples in the **c** sheet direction and **d** normal direction. Stress-strain curve for four interventricular septum samples in the **e** sheet direction and **f** normal direction of the cut piece of the pig heart myocardium

tensor. This tensor is given in terms of the deformation gradient  $F$  as:

$$C = F^T F \tag{5}$$

Alternatively, the left Cauchy-Green or Finger tensor is expressed as follows:

$$B = FF^T \tag{6}$$

The change in scalar product can now be found in terms of the material vectors  $dX_1$  and  $dX_2$  and the Lagrangian or Green strain tensor  $E$  as:

$$\frac{1}{2}(dx_1 \cdot dx_2 - dX_1 \cdot dX_2) = dX_1 \cdot E dX_2 \tag{7}$$

where  $E$  is defined as the material tensor

$$E = \frac{1}{2}(C - I) \tag{8}$$

**Constitutive modelling**

In this study, two constitutive models were considered and utilised in fitting the biaxial experimental data. The first constitutive model is the well-known Fung model (Fung, 1991). The second constitutive model considered in this study is Choi-Vito, which is similar to the Fung model. The advantage of the Choi-Vito model is that it has three separate exponentials responsible for different fibre directions.

The Fung constitutive model is given by the following strain energy function:

$$\phi = \frac{1}{2}c(e^{(Q)} - 1) \tag{9}$$

$Q$  is a quadratic function of three principal strain components. In this case,  $Q$  represents the special three-dimensional isotropy with regard to the fibre coordinate system. To account for in-plane shear strains (Sacks, 2000), the full expression of the Fung constitutive model was utilised as shown in Eq. (10):

$$Q = [b_1 E_{11}^2 + b_2 E_{22}^2 + 2b_3 E_{11} E_{22} + b_4 E_{12}^2 + 2b_5 E_{12} E_{11} + 2b_6 E_{12} E_{22}] \tag{10}$$

where  $C$ ,  $b_1$ ,  $b_2$ ,  $b_3$ ,  $b_4$ ,  $b_5$  and  $b_6$  are absolute constants which are independent of deformation and position in the body. In essence the main function  $c$  is to scale stresses.  $E_{11}$  and  $E_{22}$  are the fibre strain and cross-fibre strain, respectively.

$$S = \frac{\partial \phi}{\partial E} = \frac{1}{2} c e^Q \frac{\partial \phi}{\partial E} \tag{11}$$

$$\text{Anisotropy } (A) = \min \left\{ \left( \frac{b_1 + b_3}{b_2 + b_3} \right), \left( \frac{b_2 + b_3}{b_1 + b_3} \right) \right\} \tag{12}$$

$$c > 0, b_1 > |b_3|, b_2 > |b_3| \text{ and} \tag{13}$$

$$b_1 b_2 b_4 + 2b_3 b_6 b_5 - b_5^2 b_2 - b_6^2 b_1 - b_4 b_3^2 \tag{14}$$

The first Piola-Kirchhoff tensor  $P$  is an asymmetrical two-point tensor and as such is not completely related to the material configuration. It is possible to contrive a totally material symmetric stress tensor, known as the *second Piola-Kirchhoff stress*  $S$ ,

$$dP = \phi_*^{-1}[dp] = F^{-1} dp \tag{15}$$

$$dP = S dA; S = J F^{-1} \sigma F^{-T} \tag{16}$$

$$\delta d = F^{-T} \delta E F^{-1} \text{ and therefore } S = F^{-1} P \tag{17}$$

The Choi-Vito model (Choi & Vito, 1990) could be used for modelling soft tissues. In this study, material parameters of the Fung model were compared with those of the Choi-Vito model (Geest et al., 2006). The latter has been used for experimental data of various soft tissues including the human coronary artery (Kural et al., 2012).

As per the Choi and Vito (1990) model (Geest et al., 2006):

$$\phi = c_o \{ e^{Q_1} + e^{Q_2} + e^{Q_3} - 3 \} \tag{18}$$

where

$$Q_1 = c_1 E_{11}^2, Q_2 = c_2 E_{22}^2, Q_3 = c_3 E_{11} E_{22} \tag{19}$$

$c_o$ ,  $c_1$ ,  $c_2$  and  $c_4$  are all material constants of the Choi-Vito model. The Fung model and Choi-Vito model use the material parameters to determine the stiffness and anisotropy of the material.

**Table 4** Fung model average material parameters ( $c$ ,  $b_1$ ,  $b_2$ ,  $b_3$ ,  $b_4$ ,  $b_5$ ,  $b_6$ ) in different regions of the porcine heart. The average curve was determined using the same method as described in (Khoiy et al., 2018)

Parameters	RV region	LV region	Mid-wall region
$c$ (kPa)	2.826	3.473	2.805
$b_1$	1.763	1.490	1.409
$b_2$	3.239	2.434	2.857
$b_3$	1.294	0.704	1.141
$b_4$	1.207	2.794	1.164
$b_5$	0.548	1.407	0.204
$b_6$	0.365	1.253	0.273
Anisotropy ( $A$ )	0.695	0.723	0.650
Fit ( $R^2$ )	0.976	0.993	0.986

**Table 5** Material parameters ( $c_0, c_1, c_2, c_3$ ) of fitted Choi-Vito model using Eq. (15) on right ventricle (RV) of porcine myocardium including model fit ( $R^2$ ) and anisotropy ( $A$ ) of the same myocardium

	Sample 1 (RV)	Sample 2 (RV)	Sample 3 (RV)	Sample 4 (RV)
$R^2$	0.977	0.998	0.989	0.955
$c_0$ (kPa)	3.623	4.127	4.336	5.051
$c_1$	3.282	6.116	5.201	4.35
$c_2$	6.293	7.088	5.448	5.151
$c_3$	- 0.049	- 4.104	- 4.018	- 3.501
Anisotropy ( $A$ )	0.518	0.674	0.827	0.514545

To ensure the Choi-Vito model accuracy of material parameters, the following conditions must be satisfied and were utilised as follows:

$$c_0 > 0, b_2 > 0, b_1 b_2 > b_3^2 \tag{20}$$

Non-linear stiffness in different directions of the material is determined by the product of  $c_0 \times c_1$  and  $c_0 \times c_2$ . The metric of anisotropy of stiffness is determined by the ratio of  $c_1/c_2$  and interaction between the different axis is indicated by the product of  $c_0 \times c_3$ .

**Results**

The two constitutive models were successfully fit to the experimental data. The Choi-Vito model was found to provide the best fit with the experimental data compared to the Fung model. The thickness of RV, LV and MDW varied considerably. Equation (13) was used to determine the anisotropy of the tissue material of the pig heart in the different regions. The RV, LV and MDW showed an anisotropy of (average  $\pm$  standard deviation) of  $0.695 \pm 0.110$ ,  $0.723 \pm 0.212$  and  $0.650 \pm 0.089$ , respectively. A summary of the Fung constitutive analysis in the RV, LV and MDW in the pig heart is given in Tables 1, 2 and 3, respectively. Similarly, a summary of the

**Table 6** Material parameters ( $c_0, c_1, c_2, c_3$ ) of fitted Choi-Vito model Eq. (15) on mid-wall (MDW) of porcine myocardium including model fit ( $R^2$ ) and anisotropy ( $A$ ) of the same myocardium

	Sample 1 (septum wall)	Sample 2 (septum wall)	Sample 3 (septum wall)	Sample 4 (septum wall)
Fit ( $R^2$ )	0.982	0.988	0.980	0.963
$c_0$ (kPa)	4.727	4.215	3.131	3.161
$c_1$	4.300	3.594	1.457	2.633
$c_2$	5.565	4.892	3.652	3.261
$c_3$	- 3.821	- 1.571	1.437	1.117
Anisotropy ( $A$ )	0.275	0.609	0.569	0.857

**Table 7** Material parameters ( $c_0, c_1, c_2, c_3$ ) of fitted Choi-Vito model Eq. (15) on left ventricle (LV) of porcine myocardium including model fit ( $R^2$ ) and anisotropy ( $A$ ) of the same myocardium

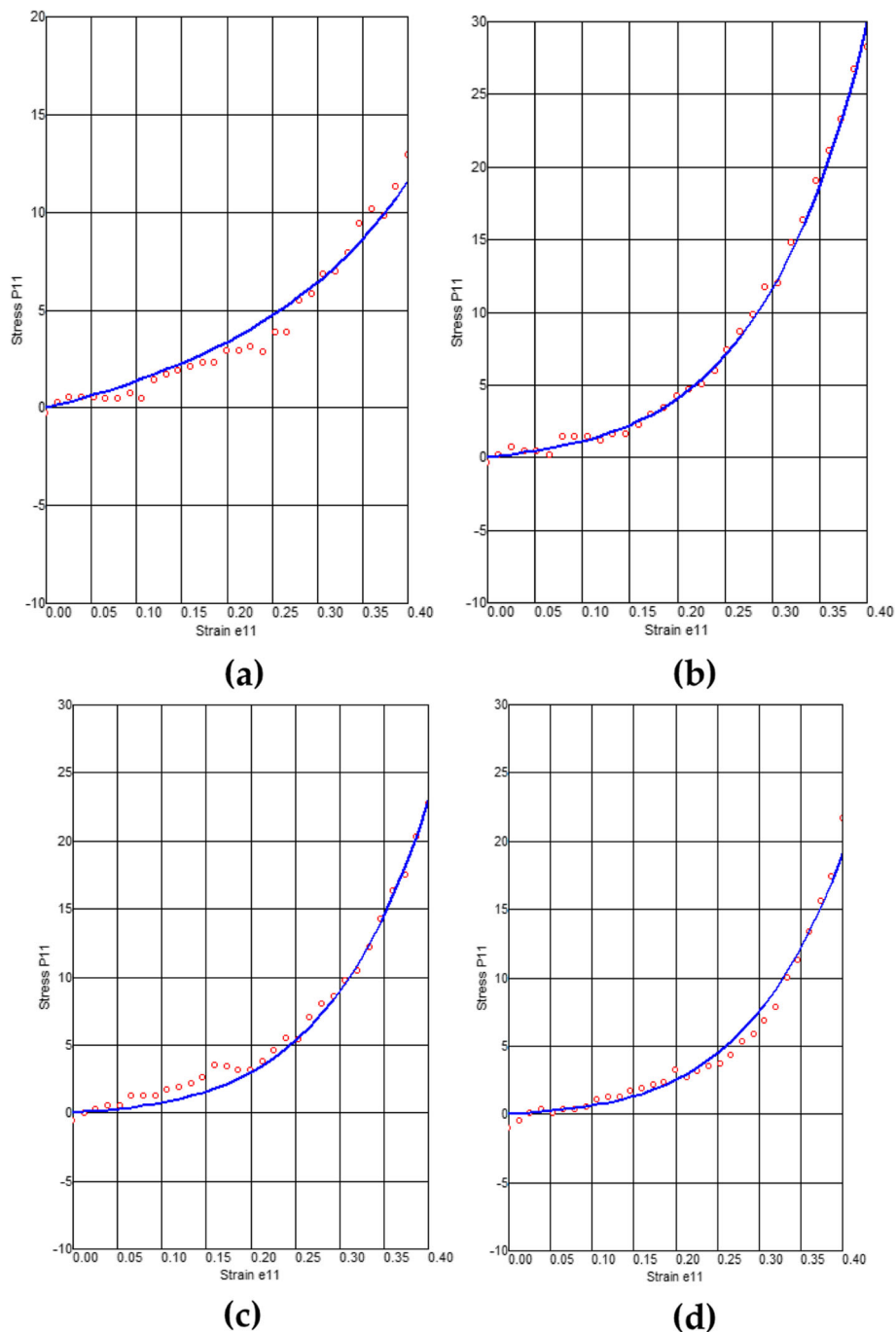
	Sample 1 (LV)	Sample 2 (LV)	Sample 3 (LV)	Sample 4 (LV)
Fit ( $R^2$ )	0.993	0.980	0.994	0.994
$c_0$ (kPa)	5.291	4.730	4.823	5.379
$c_1$	3.655	4.641	3.599	4.233
$c_2$	4.499	7.578	4.183	4.423
$c_3$	- 3.582	- 5.000	- 2.358	- 3.517
Anisotropy ( $A$ )	0.080	0.139	0.680	0.790

Choi-Vito model in the RV, LV and MDW of the pig heart is given in Tables 5, 6 and 7, respectively. The material parameters of the four pig hearts in the LV, RV and MDW were determined using Eq. (4).

Figure 3 shows the experimental data of stress-strain curves was calculated using Eq. (3) and strain was calculated using Eq. (4). The constitutive material parameters for the Fung and Choi-Vito models are presented in Tables 1, 2, 3, 4, 5, 6, 7 and 8 for the LV, RV and MDW (Figs. 4, 5 and 6). The  $R^2$  coefficients of each curve for both the Fung and Choi-Vito constitutive models are presented in Tables 1, 2, 3, 4, 5, 6, 7 and 8. For the Fung model, good fits for average curves of LV, RV and MDW were found to be 0.98, 0.99 and 0.99, respectively. For the Choi-Vito model, good fits for average curves of LV, RV and MDW were found to be 0.98, 0.99 and 0.98, respectively. For the Choi-Vito model, the anisotropy ( $A$ ) average of the RV, LV and MDW was found to be 0.633, 0.353 and 0.577, respectively. For the Fung model, the anisotropy ( $A$ ) average of the RV, LV and MDW was found to be 0.675, 0.723 and 0.650, respectively. It was also found that the anisotropy of the RV and LV were similar for the Fung model ( $p = 0.240$ ). Equally, the anisotropy of the RV and MDW were found to be close in the Fung model ( $p = 0.2259$ ). No noteworthy difference in the anisotropy was found between the LV and MDW ( $p = 0.238$ ). For the Choi-Vito model, the differences in

**Table 8** Choi-Vito model average material parameters ( $c_0, c_1, c_2, c_3$ ) in different regions of the porcine heart. The average curve was determined using the same method as described in (Khoiy et al., 2018)

Parameters	RV region	LV region	Mid-wall region
$c_0$ (kPa)	4.284	5.056	3.809
$c_1$	4.737	4.032	2.996
$c_2$	5.995	5.171	4.343
$c_3$	- 2.918	- 3.614	- 0.710
Anisotropy ( $A$ )	0.633	0.353	0.577
Fit ( $R^2$ )	0.980	0.990	0.978



**Fig. 4** Curve fitting of experimental data versus the Fung model on the RV sample cut for biaxial testing. **a** RV sample 1, **b** RV sample 2, **c** sample 3 and **d** RV sample 4. Unit for Stress P11 is kPa and Strain E11 is mm/mm

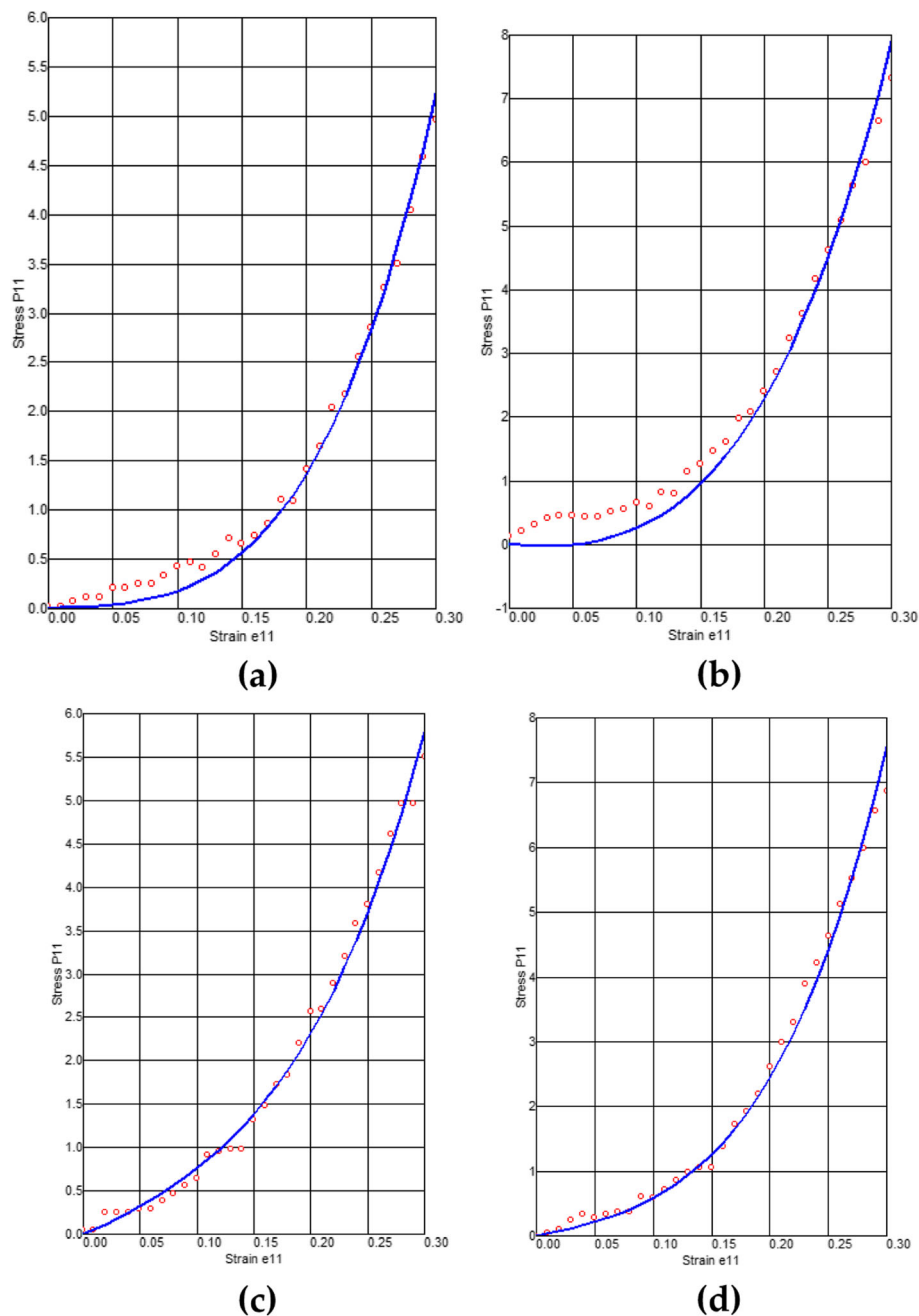
anisotropy between the RV and LV were found to be insignificant ( $p = 0.165$ ). Additionally, no noteworthy differences in anisotropy were found between the RV and MDW ( $p = 0.357$ ). The anisotropy of between the RV and MDW using the Choi-Vito model were found to be less significant ( $p = 0.147$ ). Figure 7 shows the box plot of the Fung model in comparing the material parameters

of the RV, LV and MDW regions of the pig heart. The difference in material parameters of the Choi-Vito model in pig heart regions is shown in Fig. 8.

### Discussion and conclusions

This study shows that the mechanical behaviour of porcine myocardial tissue is non-linear and anisotropic.

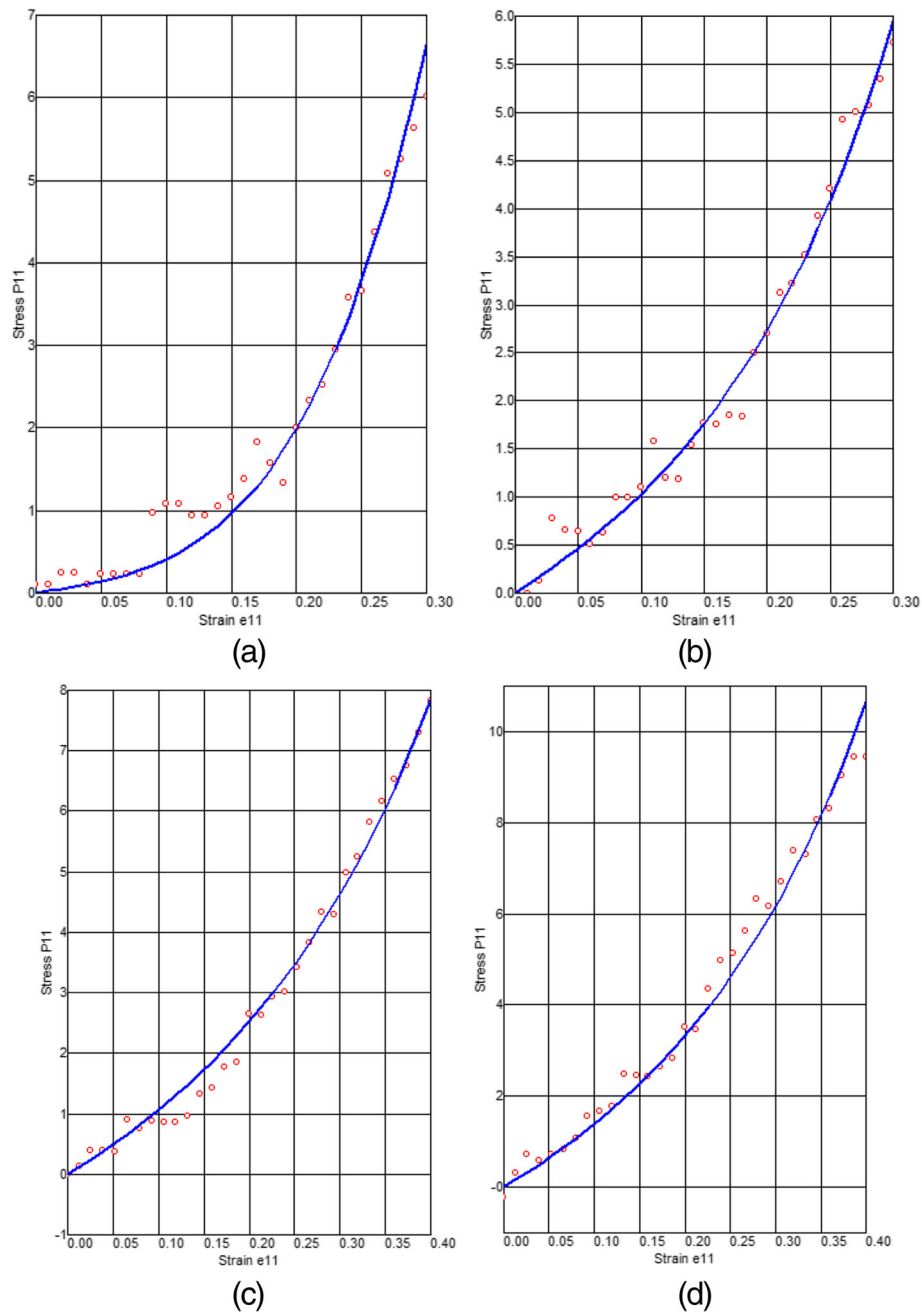




**Fig. 5** Curve fitting of experimental data versus the Fung model on the LV sample cut for biaxial testing. **a** LV sample 1, **b** LV sample 2, **c** LV sample 3 and **d** LV sample 4. Unit for Stress P11 is kPa and Strain E11 is mm/mm

Most often only the LV is considered (Brooks et al., 2014; Khalafvand et al., 2018; Shen et al., 2016). However, in this study, the overall characteristic of the LV, MDW and RV is consistent with other soft tissues (Aydin et al., 2017; Cooney et al., 2016; Duprey et al., 2016). Biaxial testing in the LV, MW and RV was conducted. Even though experimental data is available on the LV myocardium of porcine, no

biaxial experimental data is available for the RV and MDW. Five fresh porcine hearts were tested using biaxial test equipment. Biaxial deformation was performed on the LV myocardium, RV myocardium and MDW. The biaxial experimental data was fit to the Fung exponential function. Interesting observations were made regarding the different mechanics of these regions of the pig heart.

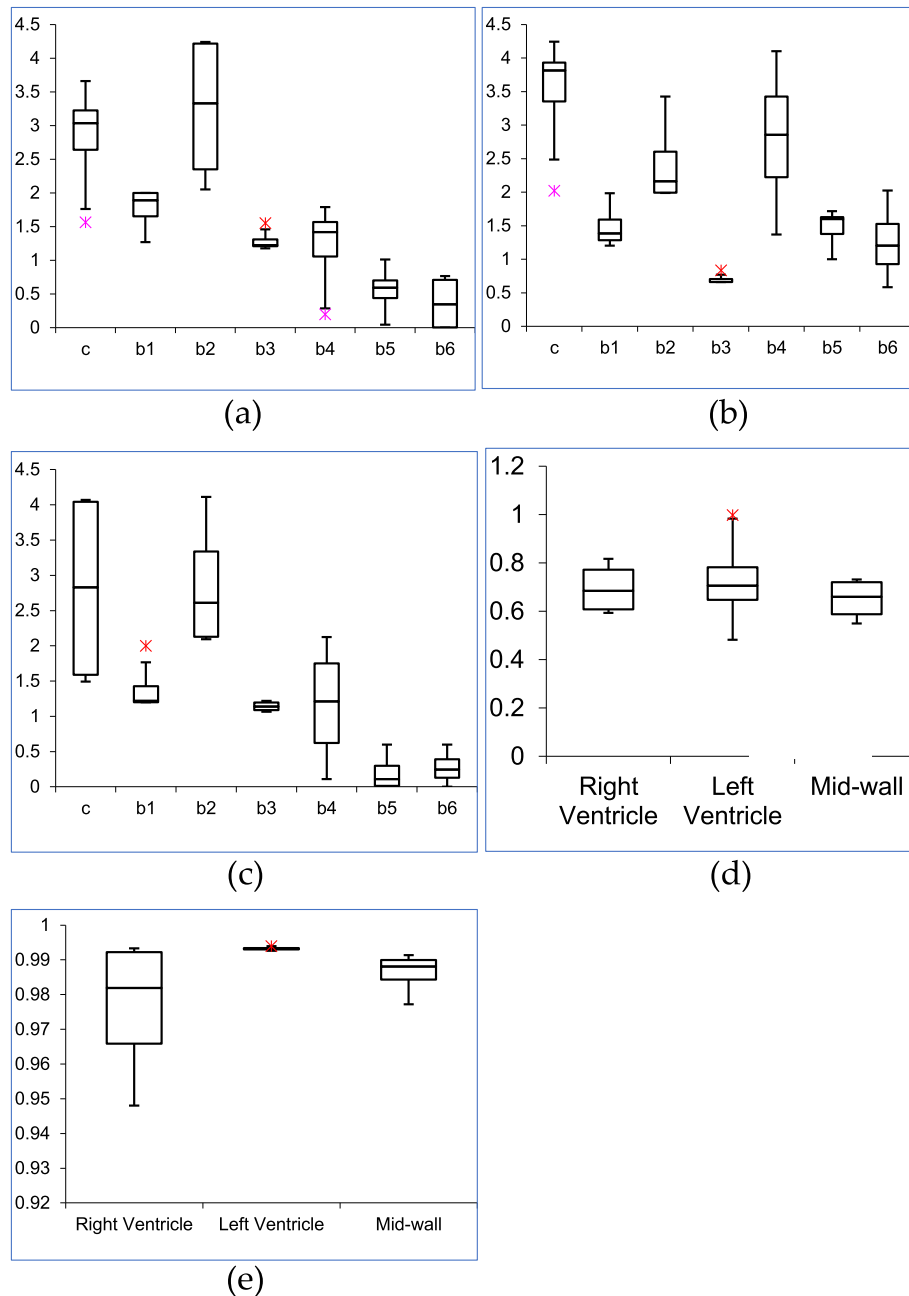


**Fig. 6** Curve fitting of experimental data versus the Fung model on the MDW sample cut for biaxial testing. **a** MDW sample 1, **b** MDW sample 2, **c** MDW sample 3, and **d** MDW sample 4. Unit for Stress P11 is kPa and Strain E11 is mm/mm

To the author's knowledge, this study presents an interesting finding. In most cases previous, the material properties of porcine have been assumed to be the same in all regions of the heart. This means that the computational models developed also depend on this assumption. In this experiment, the material properties of the LV, RV and MDW of the porcine heart were found not to be the same and should be treated as such. The important observation is that the stiffness confident  $b_3$  is zero in all

regions. As a result of the myocardial tissue structure, the cardiac tissue has been found to show non-linear material behaviour (Ahmad et al., 2018; Chalon et al., 2018). The material behaviour of myocardial tissue in different heart regions may differ based on the variation of the intricate structure.

Mechanical properties of the myocardial tissues play an important role in the development of computational models to study various mechanisms of heart diseases.



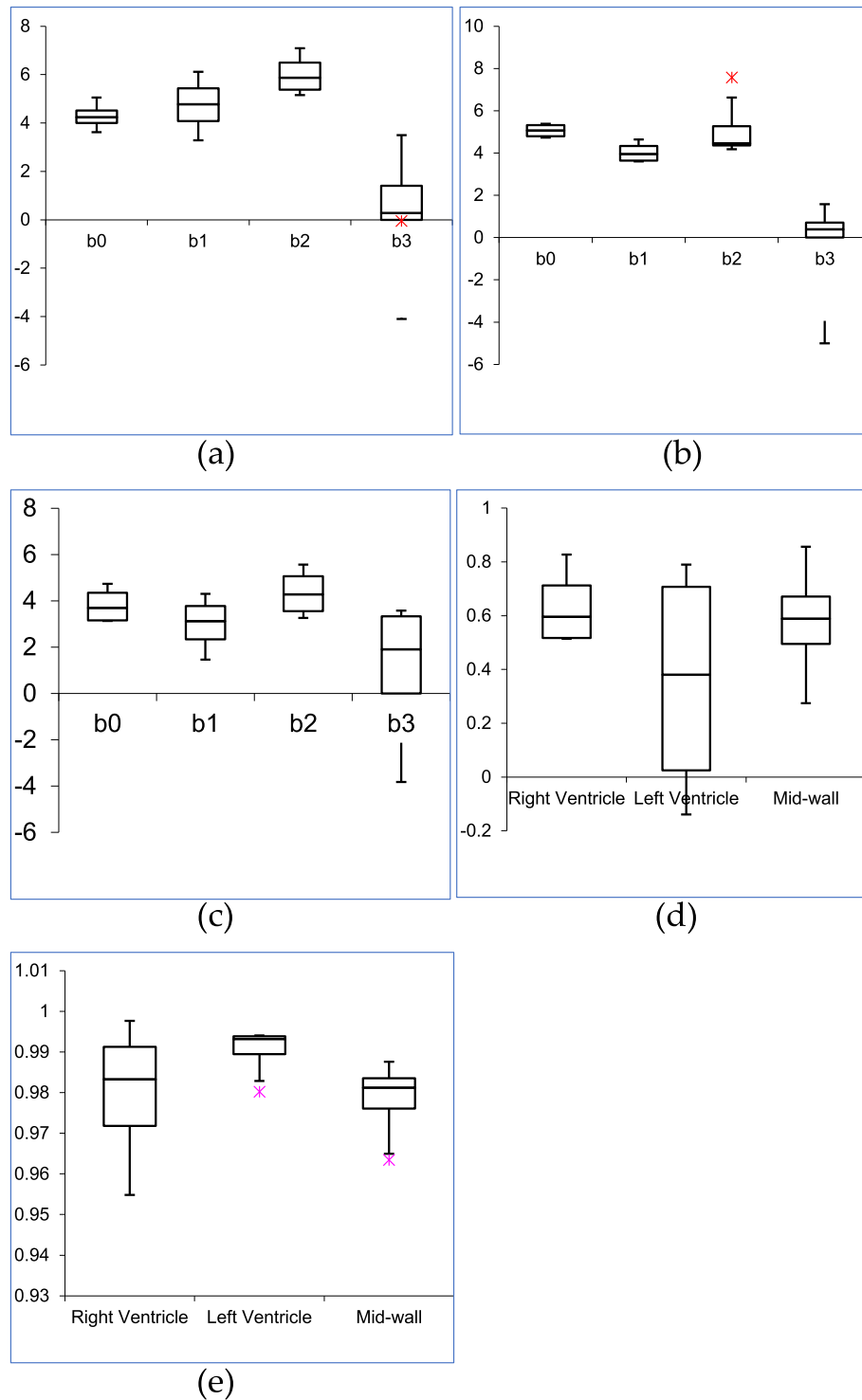
**Fig. 7** Box plot of Fung model mechanical material constitutive parameters ( $c$ ,  $b_1$ ,  $b_2$ ,  $b_3$ ,  $b_4$ ,  $b_5$  and  $b_6$ ) determined for RV, LV and MDW as shown in Table 4. **a** Box plot of RV; **b** box plot of LV; **c** box plot of MDW; **d** box plot of anisotropy ( $A$ ) of RV, LV and MDW; and **e** box plot of model for ( $R^2$ ) of RV, LV and MDW

Inaccuracy in the mechanical properties of the heart region may affect the accuracy of the computational models developed. Computational modelling is increasingly utilised to further understand pathological conditions. Various new interventions and therapies have been developed based on knowledge gained from these computational models.

Regional differences in material parameters in a passive pig heart were found. This finding is similar to that

regarding the small intestine, where it was observed that passive small intestine tissue exhibits material parameter differences based on location (Sokolis et al., 2011; Sokolis, 2017). Similarly, it was also observed that porcine small bowel mesentery may exhibit different material parameters of the Fung model in different regions (Khoiy et al., 2018).

To model the mechanical response of the passive pig heart tissue in three different regions, the Fung model



**Fig. 8** Box plot of Choi-Vito model showing the material parameters ( $c_0, c_1, c_2, c_3$ ) determined for RV, LV and MDW as shown in Table 8. **a** Boxplot of RV; **b** box plot of LV; **c** box plot of MDW; **d** box plot of anisotropy ( $A$ ) of RV, LV and MDW; and **e** box plot of model for  $(R^2)$  of RV, LV and MDW

(Fung, 1991) and Choi-Vito model (Choi & Vito, 1990) were selected as shown in Fig. 2a. In Fig. 2b, the direction of the fibres used during mechanical testing in the

passive myocardium is shown. The two constitutive models were also selected based on the accuracy of fit ( $R^2$ ) as shown in Figs. 4, 5 and 6. As shown in Tables 3,

4 and 5, the Fung model was able to fit the experimental data as expected. However, the Choi-Vito model (see values of  $R^2$  in Tables 5, 6 and 7) proved to fit the experimental data well. It was found that there is no major difference of  $R^2$  between the fit experimental data using the Fung and Choi-Vito models (see Tables 4 and 8). An average Fung and Choi-Vito model in three different pig heart regions could be utilised for the development of computational models as listed in Tables 4 and 8. Like various soft tissues (Sommer et al., 2015; Bellini et al., 2011; Abbasi et al., 2016), passive myocardium in the three different regions were found to be anisotropic. In this study, the average material parameters in the RV, LV and MDW regions of passive pig heart can be employed in finite element analysis (FEA). FEA may then be utilised to study the mechanisms of MI in different stages by obtaining the average regional stresses and strains of the myocardium.

#### Acknowledgements

This work was supported by the University of South Africa through the acquisition of biaxial testing (Biotester CellScale) equipment used in conducting this experiment.

#### Compliance with ethical standards

This study was funded by the University of South Africa through CAPEX programme.

#### Author's contributions

FN developed the project, conceptualise the work, conduct experiments and analysis, and writes the paper. The author read and approved the final manuscript.

#### Funding

No funding.

#### Availability of data and materials

The datasets generated and/or analysed during the current study are available in the [MENDELEY DAT] repository [<https://doi.org/10.17632/5xjgw5p8n.2>]. The datasets used and/or analysed during the current study are available from the corresponding author on reasonable request (Nemavhola, 2020).

All data generated or analysed during this study are included in this published article [and its supplementary information files].

#### Declarations

##### Ethics approval

All applicable international, national, and/or institutional guidelines for the care and use of animals were followed.

##### Competing interests

The author declares that he has no conflict of interest.

Received: 12 October 2020 Accepted: 22 March 2021

Published online: 20 April 2021

#### References

Abbasi, M., Barakat, M. S., Vahidkhal, K., & Azadani, A. N. (2016). Characterization of three-dimensional anisotropic heart valve tissue mechanical properties using inverse finite element analysis. *Journal of the Mechanical Behavior of Biomedical Materials*, 62, 33–44. <https://doi.org/10.1016/j.jmbbm.2016.04.031>.

Ahmad, F., Prabhu, R., Liao, J., Soe, S., Jones, M. D., Miller, J., ... Theobald, P. S. (2018). Biomechanical properties and microstructure of neonatal porcine ventricles. *Journal of the Mechanical Behavior of Biomedical Materials*, 88, 18–28. <https://doi.org/10.1016/j.jmbbm.2018.07.038>.

Anssari-Benam, A., Tseng, Y. T., Holzapfel, G. A., & Bucchi, A. (2019). Rate-dependency of the mechanical behaviour of semilunar heart valves under biaxial deformation. *Acta Biomaterialia*, 88, 120–130. <https://doi.org/10.1016/j.actbio.2019.02.008>.

Aydin, R., et al. (2017). Experimental characterization of the biaxial mechanical properties of porcine gastric tissue. *Journal of the Mechanical Behavior of Biomedical Materials*, 74, 499–506. <https://doi.org/10.1016/j.jmbbm.2017.07.028>.

Bellini, C., Glass, P., Sitti, M., & di Martino, E. S. (2011). Biaxial mechanical modeling of the small intestine. *Journal of the Mechanical Behavior of Biomedical Materials*, 4(8), 1727–1740. <https://doi.org/10.1016/j.jmbbm.2011.05.030>.

Boateng, D., Agyemang, C., Beune, E., Meeks, K., Smeeth, L., Schulze, M. B., ... Klipstein-Grobusch, K. (2018). Cardiovascular disease risk prediction in sub-Saharan African populations—Comparative analysis of risk algorithms in the RODAM study. *International Journal of Cardiology*, 254, 310–315. <https://doi.org/10.1016/j.ijcard.2017.11.082>.

Boateng, D., Agyemang, C., Kengne, A. P., Grobbee, D. E., & Klipstein-Grobusch, K. (2018). Cardiovascular disease risk prediction in low income settings: A call for context specific risk equations. *International Journal of Cardiology*, 265, 239. <https://doi.org/10.1016/j.ijcard.2018.05.010>.

Brooks, P. A., Khoo, N. S., & Hornberger, L. K. (2014). Systolic and diastolic function of the fetal single left ventricle. *Journal of the American Society of Echocardiography*, 27(9), 972–977. <https://doi.org/10.1016/j.echo.2014.06.012>.

Chalon, A., Favre, J., Piotrowski, B., Landmann, V., Grandmougin, D., Maureira, J. P., ... Tran, N. (2018). Contribution of computational model for assessment of heart tissue local stress caused by suture in LVAD implantation. *Journal of the Mechanical Behavior of Biomedical Materials*, 82, 291–298. <https://doi.org/10.1016/j.jmbbm.2018.03.032>.

Choi, H. S., & Vito, R. (1990). Two-dimensional stress-strain relationship for canine pericardium. *Journal of Biomechanical Engineering*, 112(2), 153–159. <https://doi.org/10.1115/1.2891166>.

Cooney, G. M., Lake, S. P., Thompson, D. M., Castile, R. M., Winter, D. C., & Simms, C. K. (2016). Uniaxial and biaxial tensile stress–stretch response of human linea alba. *Journal of the Mechanical Behavior of Biomedical Materials*, 63, 134–140. <https://doi.org/10.1016/j.jmbbm.2016.06.015>.

de Bortoli, D., et al. (2011). Hyperfit—curve fitting software for incompressible hyperelastic material models. In *Proceedings of COBEM*.

Dokos, S., et al. (2002). Shear properties of passive ventricular myocardium. *American Journal of Physiology-Heart and Circulatory Physiology*, 283(6), H2650–H2659.

Duprey, A., Trabelsi, O., Vola, M., Favre, J. P., & Avril, S. (2016). Biaxial rupture properties of ascending thoracic aortic aneurysms. *Acta Biomaterialia*, 42, 273–285. <https://doi.org/10.1016/j.actbio.2016.06.028>.

Fatemifar, F., Feldman, M. D., Oglesby, M., & Han, H. C. (2019). Comparison of biomechanical properties and microstructure of trabeculae carneae, papillary muscles, and myocardium in the human heart. *Journal of Biomechanical Engineering*, 141(2), 021007. <https://doi.org/10.1115/1.4041966>.

Fung, Y. (1991). What are the residual stresses doing in our blood vessels? *Annals of Biomedical Engineering*, 19(3), 237–249. <https://doi.org/10.1007/BF02584301>.

Gallo, D., Montanaro, C., & Morbiducci, U. (2019). Computational modelling in congenital heart disease: Challenges and opportunities. *International Journal of Cardiology*, 276, 116–117. <https://doi.org/10.1016/j.ijcard.2018.11.109>.

Geest, J. P. V., Sacks, M. S., & Vorp, D. A. (2006). A planar biaxial constitutive relation for the luminal layer of intra-luminal thrombus in abdominal aortic aneurysms. *Journal of Biomechanics*, 39(13), 2347–2354. <https://doi.org/10.1016/j.jbiomech.2006.05.011>.

Khalafvand, S., et al. (2018). Assessment of human left ventricle flow using statistical shape modelling and computational fluid dynamics. *Journal of Biomechanics*, 74, 116–125. <https://doi.org/10.1016/j.jbiomech.2018.04.030>.

Khoiy, K. A., et al. (2018). Anisotropic and nonlinear biaxial mechanical response of porcine small bowel mesentery. *Journal of the Mechanical Behavior of Biomedical Materials*, 78, 154–163. <https://doi.org/10.1016/j.jmbbm.2017.11.017>.

Kramer, K., et al., An investigation of layer-specific tissue biomechanics of porcine atrioventricular valve anterior leaflets. Available at SSRN 3321895, 2019.

Kural, M. H., Cai, M., Tang, D., Gwyther, T., Zheng, J., & Billiar, K. L. (2012). Planar biaxial characterization of diseased human coronary and carotid arteries for computational modeling. *Journal of Biomechanics*, 45(5), 790–798. <https://doi.org/10.1016/j.jbiomech.2011.11.019>.

Martinsson, A., Li, X., Torp-Pedersen, C., Zöller, B., Andell, P., Andreassen, C., ... Andersson, C. (2019). Outcomes associated with dual antiplatelet therapy

- after myocardial infarction in patients with aortic stenosis. *International Journal of Cardiology*, 281, 140–145. <https://doi.org/10.1016/j.ijcard.2019.01.063>.
- Masithulela, F. (2015a). Analysis of passive filling with fibrotic myocardial infarction. In *ASME international mechanical engineering congress and exposition*. American Society of Mechanical Engineers.
- Masithulela, F. (2015b). The effect of over-loaded right ventricle during passive filling in rat heart: A biventricular finite element model. In *ASME 2015 international mechanical engineering congress and exposition*. American Society of Mechanical Engineers.
- Masithulela, F. (2016b). Bi-ventricular finite element model of right ventricle overload in the healthy rat heart. *Bio-Medical Materials and Engineering*, 27(5), 507–525. <https://doi.org/10.3233/BME-161604>.
- Masithulela, F. J. (2016a). *Computational biomechanics in the remodelling rat heart post myocardial infarction*. University of Cape Town.
- Masithulela, F. J. (2016c). Computational biomechanics in the remodelling rat heart post myocardial infarction. In *Human biology*, (p. 263). University of Cape Town.
- Ndlovu, Z., Nemavhola, F., & Desai, D. (2020). Biaxial mechanical characterization and constitutive modelling of sheep sclera soft tissue. *Russian Journal of Biomechanics/Rossijski Zurnal Biomehaniki*, 24(1), 84–96.
- Nemavhola, F. (2017a). Fibrotic infarction on the LV free wall may alter the mechanics of healthy septal wall during passive filling. *Bio-Medical Materials and Engineering*, 28(6), 579–599. <https://doi.org/10.3233/BME-171698>.
- Nemavhola, F. (2017b). Biaxial quantification of passive porcine myocardium elastic properties by region. *Engineering Solid Mechanics*, 5(3), 155–166.
- Nemavhola, F. (2019a). Mechanics of the septal wall may be affected by the presence of fibrotic infarct in the free wall at end-systole. *International Journal of Medical Engineering and Informatics*, 11(3), 205–225. <https://doi.org/10.1504/IJMEI.2019.101632>.
- Nemavhola, F. (2019b). Detailed structural assessment of healthy interventricular septum in the presence of remodeling infarct in the free wall—A finite element model. *Heliyon*, 5(6), e01841. <https://doi.org/10.1016/j.heliyon.2019.e01841>.
- Nemavhola, F. (2020). *Mechanical properties of pig heart - biaxial dataset for left ventricle, mid-wall and right ventricle*. University of South Africa.
- Ngwangwa, H. M., & Nemavhola, F. (2020). Evaluating computational performances of hyperelastic models on supraspinatus tendon uniaxial tensile test data. *Journal of Computational Applied Mechanics*. (in press)
- Nordbø, Ø., Lamata, P., Land, S., Niederer, S., Aronsen, J. M., Louch, W. E., Vik, J. O. (2014). A computational pipeline for quantification of mouse myocardial stiffness parameters. *Computers in Biology and Medicine*, 53, 65–75. <https://doi.org/10.1016/j.compbiomed.2014.07.013>.
- Roth, G. A., Johnson, C., Abajobir, A., Abd-Allah, F., Abera, S. F., Abyu, G., Murray, C. (2017). Global, regional, and national burden of cardiovascular diseases for 10 causes, 1990 to 2015. *Journal of the American College of Cardiology*, 70(1), 1–25. <https://doi.org/10.1016/j.jacc.2017.04.052>.
- Sacks, M. S. (2000). Biaxial mechanical evaluation of planar biological materials. *Journal of Elasticity and the Physical Science of Solids*, 61(1-3), 199.
- Shen, J. J., Xu, F. Y., & Yang, W. A. (2016). Finite element analysis of left ventricle during cardiac cycles in viscoelasticity. *Computers in Biology and Medicine*, 75, 63–73. <https://doi.org/10.1016/j.compbiomed.2016.05.012>.
- Sokolis, D. P. (2017). Experimental study and biomechanical characterization for the passive small intestine: Identification of regional differences. *Journal of the Mechanical Behavior of Biomedical Materials*, 74, 93–105. <https://doi.org/10.1016/j.jmbm.2017.05.026>.
- Sokolis, D. P., Orfanidis, I. K., & Peroulis, M. (2011). Biomechanical testing and material characterization for the rat large intestine: Regional dependence of material parameters. *Physiological Measurement*, 32(12), 1969–1982. <https://doi.org/10.1088/0967-3334/32/12/007>.
- Sommer, G., Schriefel, A. J., Andrä, M., Sacherer, M., Viertler, C., Wolinski, H., & Holzapfel, G. A. (2015). Biomechanical properties and microstructure of human ventricular myocardium. *Acta Biomaterialia*, 24, 172–192. <https://doi.org/10.1016/j.actbio.2015.06.031>.
- Stavropoulou, E. A., Dafalias, Y. F., & Sokolis, D. P. (2009). Biomechanical and histological characteristics of passive esophagus: Experimental investigation and comparative constitutive modeling. *Journal of Biomechanics*, 42(16), 2654–2663. <https://doi.org/10.1016/j.jbiomech.2009.08.018>.
- Yu, H., del Nido, P. J., Geva, T., Yang, C., Tang, A., Wu, Z., ... Tang, D. (2019). Patient-specific in vivo right ventricle material parameter estimation for patients with tetralogy of Fallot using MRI-based models with different zero-load diastole and systole morphologies. *International Journal of Cardiology*, 276, 93–99. <https://doi.org/10.1016/j.ijcard.2018.09.030>.

## Publisher's Note

Springer Nature remains neutral with regard to jurisdictional claims in published maps and institutional affiliations.

**Submit your manuscript to a SpringerOpen<sup>®</sup> journal and benefit from:**

- Convenient online submission
- Rigorous peer review
- Open access: articles freely available online
- High visibility within the field
- Retaining the copyright to your article

---

Submit your next manuscript at ► [springeropen.com](https://www.springeropen.com)

---