

## Plate 4 - Obsidian Cores



Large Cores of Obsidian as they were transported from Melos. Most were then chipped to form tools. The smallest core in the illustration has a smooth, rounded base and may have been used as a burnisher.

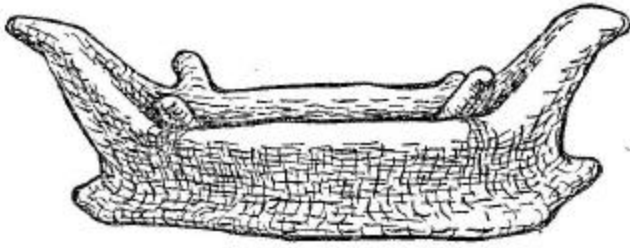
*From Papathanassopoulos: 1981, 120-121*

Plate 5 - Cycladic “Frying Pan”



Clay “Frying Pan” from ECII (2800-2300 BC) period. Cemetery of Chalandriani, Seros.  
(From Papathanassopoulos: 1981, 174)

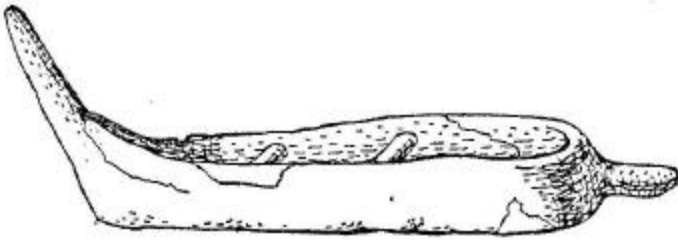
Plate 6 - Early Bronze Age Boats



Mochlos dug-out

Early Minoan Model Boats (left).

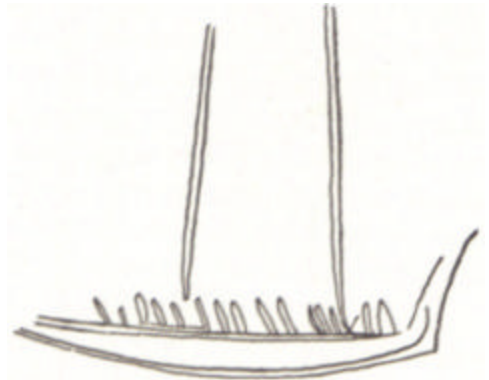
(From Hutchinson: 1962, 92)



Palaikastro model boat

Illustration of Masted Boat from  
Early Helladic Vase found at  
Orchomenos (Right).

(From Vermeule: 1974, 54)



Early Minoan Seals (ca 2000  
BC) (below). Ivory Seal from  
Platanos on bottom left.

(From Casson: 1971, figs 34-36)

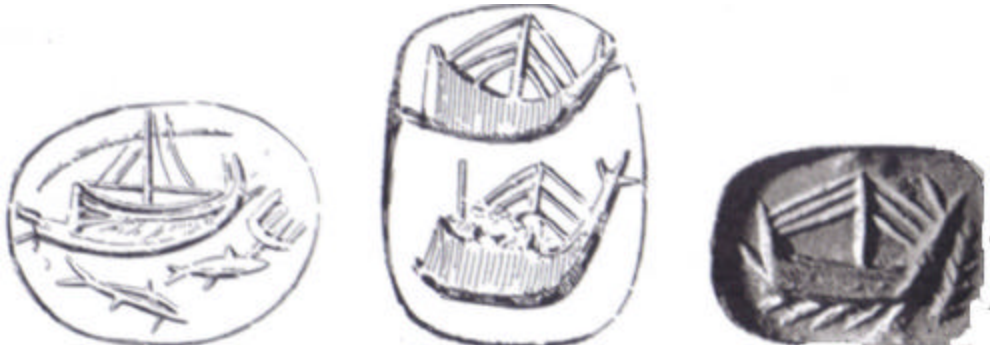


Plate 7 - Early Minoan Pouring Vessels

Beak-Spouted Jug in Vasiliki Style (below).

(From Vasilakis: 49)



Light-on-Dark “Teapots” (above).

(From Vasilakis: 49)



Barbotine Jug (above).

(From Vasilakis: 51)



Light-on-Dark Teapot - EMIII/MMIa (2200-2000 BC)  
(above).

(From Higgins: 1997, 27)

Plate 8 - Sources of Metals in the Aegean



Known sources of Copper, Lead and Gold in the Aegean

(from Branigan: 1974, 60)

## Plate 9 - Cycladic Figurines

Early Cycladic Marble Figurine from Naxos. (below).

(From Papathanassopoulos: 1981, 192)



Ivory Figurine from Archanes, Crete. This is possibly a local copy of the Cycladic design. (above).

(From Vasilakis: 55)