



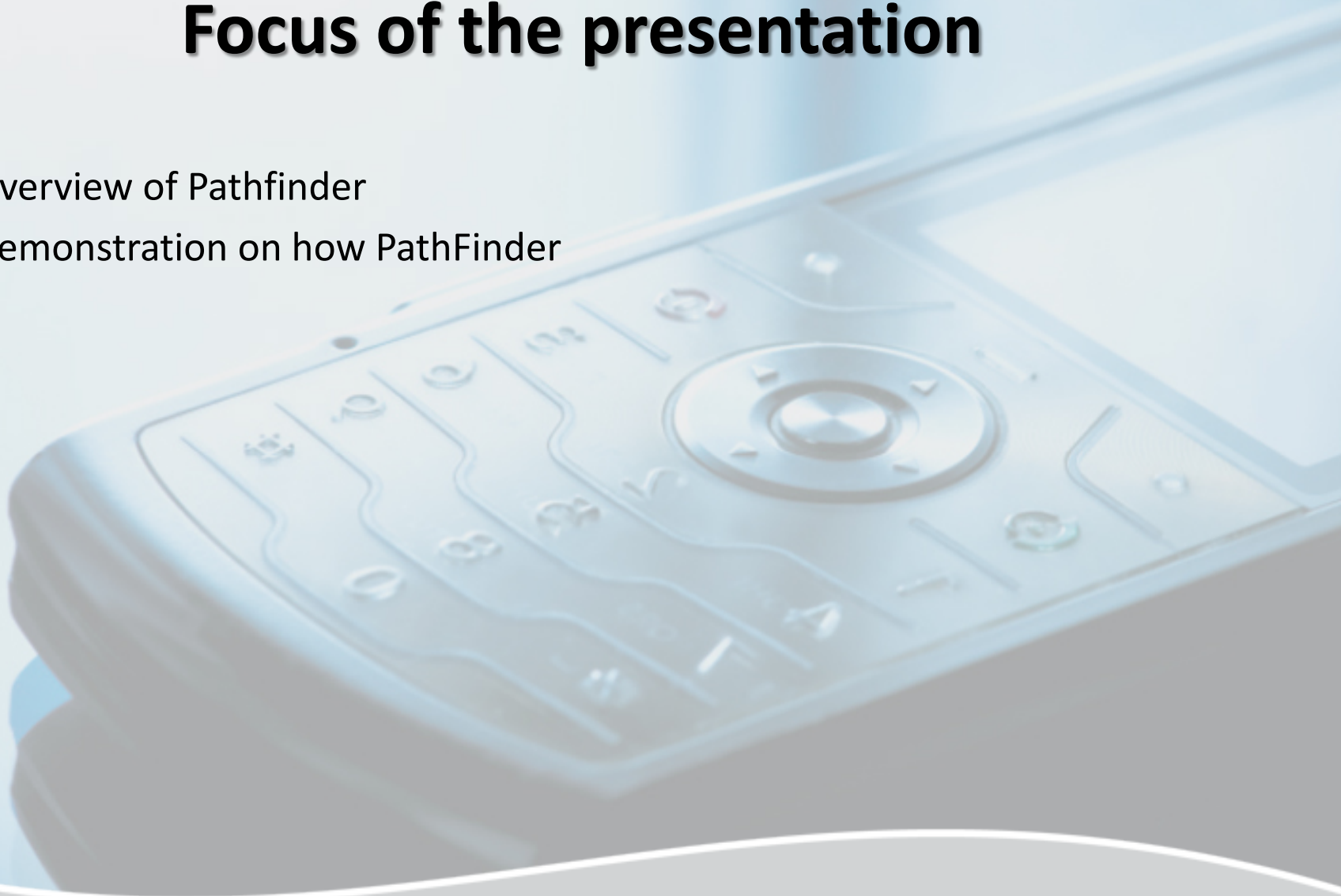
PathFinder

T. Mpeiwa

Library Technology Event: 30/09/14

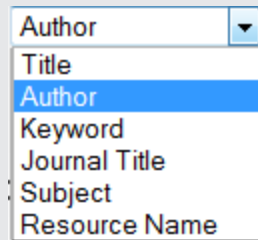
Focus of the presentation

- Overview of Pathfinder
- Demonstration on how PathFinder



PathFinder

- A search tool that **expand** your Catalogue/Webpac search
- Another way of promoting the **usage** of our **e-resources**
- You can expand your search by repeating a similar search through:



A dropdown menu with a white background and a thin border. The menu is open, showing a list of search criteria. The top item is 'Author' with a small downward arrow to its right. Below it are 'Title', 'Author' (highlighted in blue), 'Keyword', 'Journal Title', 'Subject', and 'Resource Name'.

- **Google scholar**
- **A selection of:**
 - *Full text databases*
 - *General reference databases*
 - *Indexes & Abstracts databases*

Available PathFinder Resources

1. **Google Scholar**
2. **Full Text databases**
 - Academic OneFile
 - Academic Search Premier
 - JSTOR
 - ProQuest
 - Sabinet: SA ePublications
 - Sabinet: SA Media
3. **General Reference databases**
 - Encyclopedia Britannica
 - Oxford Reference Online
4. **Indexes & Abstracts databases**
 - PubMed
 - Sabinet: Reference Platform
5. **Book Information database**
6. **Global Books in Print database**
7. **Link to RefWorks**

Selected based on popularity

Browse Level View

- At the **Browse level** (of your catalogue search results) - *i.e* when you see a list of **all retrieved resources**
- **Pathfinder** takes your **search word / term** and provides an option to try a similar search in **Google scholar ONLY**
 - **WHY?** The ***Other Resources*** links are linked to **specific fields** within a specific record *e.g.* the **Subject / Title / ISBN** of a resource

Bibliographic Level View

- You **select a specific title** from the list of your retrieved search results
- At the **Bibliographic level** (of your catalogue search results) - *i.e* when you **select a specific title**, you can then **expand your Subject Title / ISBN search** via:
 - **Google scholar + all the selected databases**
- It is also still possible to expand your **search word /term** via **Sabinet: Reference Platform**
- You can also use the **book information databases** links:
 - *Global Books in Print > to check if the title is still in print*
 - *RefWorks > to export your title to RefWorks*

Google Scholar setup

- You can **setup GS** to give **search results preference** to Unisa resources:
 - *Go to Google scholar*
 - *Go to 'Settings'*
 - *Go to 'Library links'*
 - *Search for 'University of South Africa - Get This Item at UNISA'*
 - *Add (select) it*
 - *Save your settings*



Thank You...