

Our Dream: Developing a framework for the state-of-the-art Learning Commons at UNISA's Western Cape Region

*Mdu Ncongwane
Branch Librarian: Cape Town*

*Library Technology
Event 2012*

Learning spaces in the 21st century need to foster discovery, innovation, and scholarship, not simply contain them. (Brown & Long, 2006)

My thoughts

- **Sense of place**
- **ODL in a developing country**
- **Unemployed youth**
- **When the economy goes south, education goes north**
- ***Serving two gods***
- ***Technology without humans***
- ***Mill's Report on 'Space for student personal study' and the 'full-time' student***

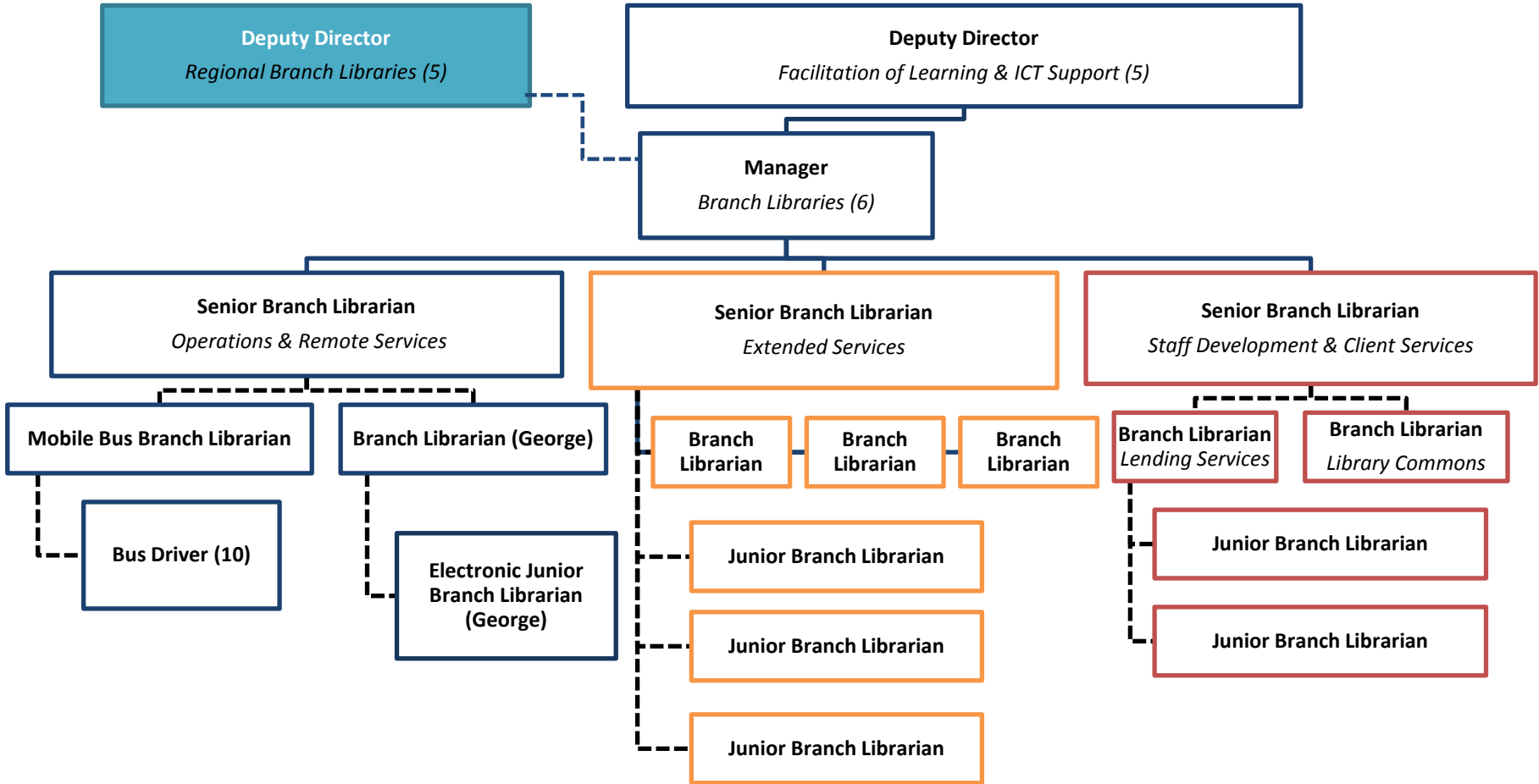
Parnell's article on ODL costing

- **Implicit reliance on students and external institutions**
- **Fraction of library resources and 'other advantages'**
- **On-campus versus off-campus pass rate**
- **Drop out rate higher in ODL: research needed**
- **ODL is a way to reduce the costs of academic programs**
- **Altruism and reciprocity in partnerships**
- **Partnerships are seldom considered or costed**
- **Devise alternatives to traditional reserve collections**

Important documents

- **Western Cape Regional Operational regional plan 2012**
 - *Positive student experience*
 - *Student success*
 - *Teaching effectiveness*
 - *Purposeful learning*
- **Mills Report**
 - *Prescribed reading redundant*
 - *Arrangement with other HE institutions*
 - *Mobile library versus public libraries' usage*

LIBRARY STRUCTURE 2015



Content

- **Purpose and context**
- **E-Library or Commons**
- **Lippincott's model**
- **Staffing requirements**
- **Resources & facilities**
- **Internet access**
- **Challenges**



STATISTIEKE STATISTICS

Area: 129 440 km²
Capital: Cape Town/Kaapstad
Highest Height: 2256m

Oppervlakte: 129 440 km²
Hoofstad: Kaapstad
Hoogste Hoogte: 2256m

VERKLARING EXPLANATION

International Boundary

Provincial Boundary

National Freeway, National Route

Aerial Route

Main Route

Secondary Route

Railway

Provinciale Grens

Nasionale Oewerpad, Nasionale Pad

Hoofweg

Bekerspad

Spoorlyn

Parental Water

Non-parental Water

Canal

City/Town

Small Centre

International Airport

Stad/hoofstad

Ne-Stad/hoofstad

Klein-Plaas

Stad-Or

Klein-Sentrum

Internasionale Lughawe

1:800 000

SECOND EDITION TWEEDE UITGAWE 2001

Scale: 1:800 000

Legend for symbols: Airport/Aerodrome, Toll Plaza, Protected Area, Magisterial District, Local Municipality, Lighthouse/Vligwiel, Toll Plaza, Protected Area, Landreedsdorp, Plaaslike Munisipaliteit.

Scale: 1:800 000

Scale in Kilometres: 0 5 10 15 20 25 30

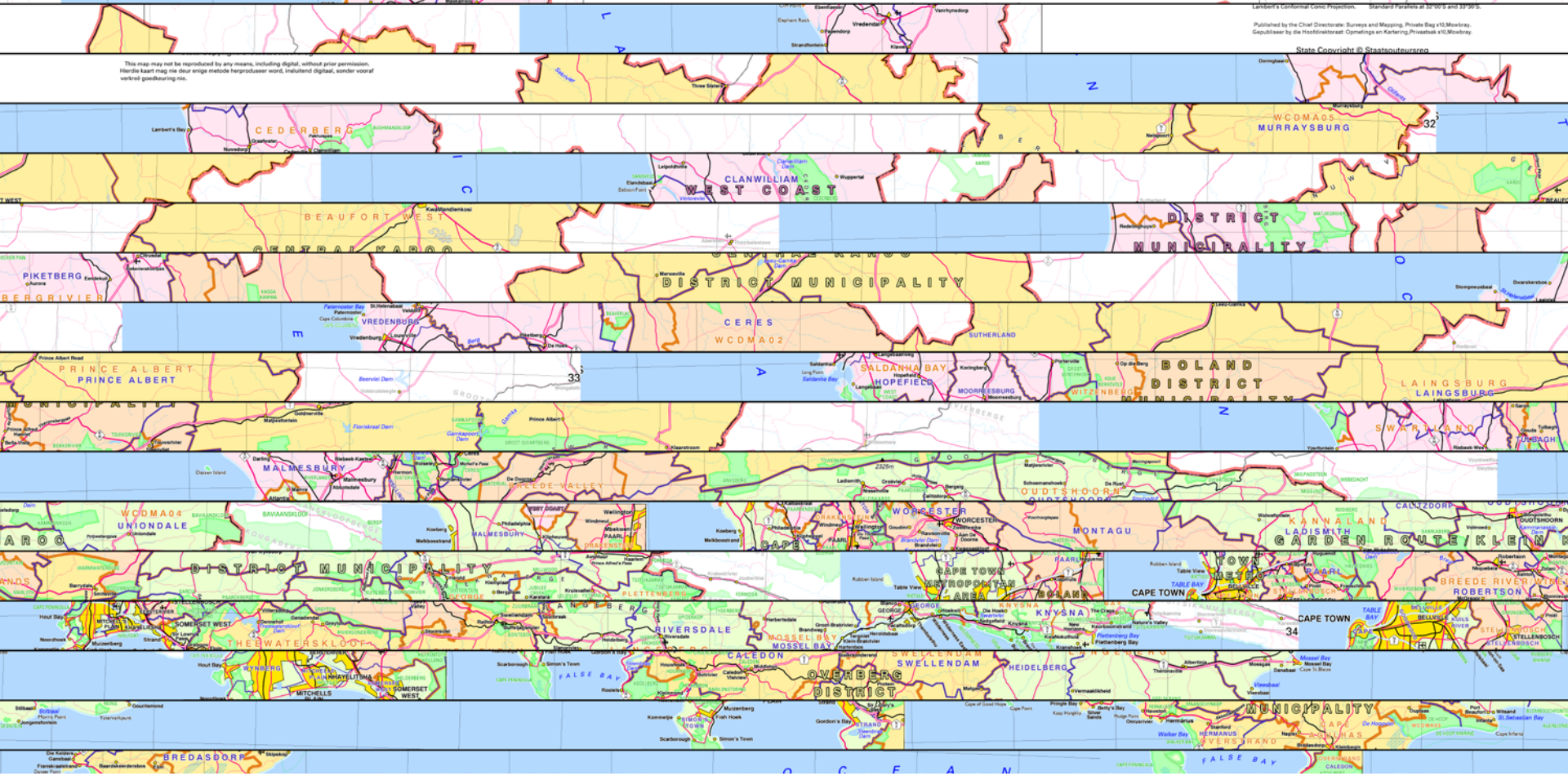
Scale in Miles: 0 3 6 9 12 15 18 21 24 27 30

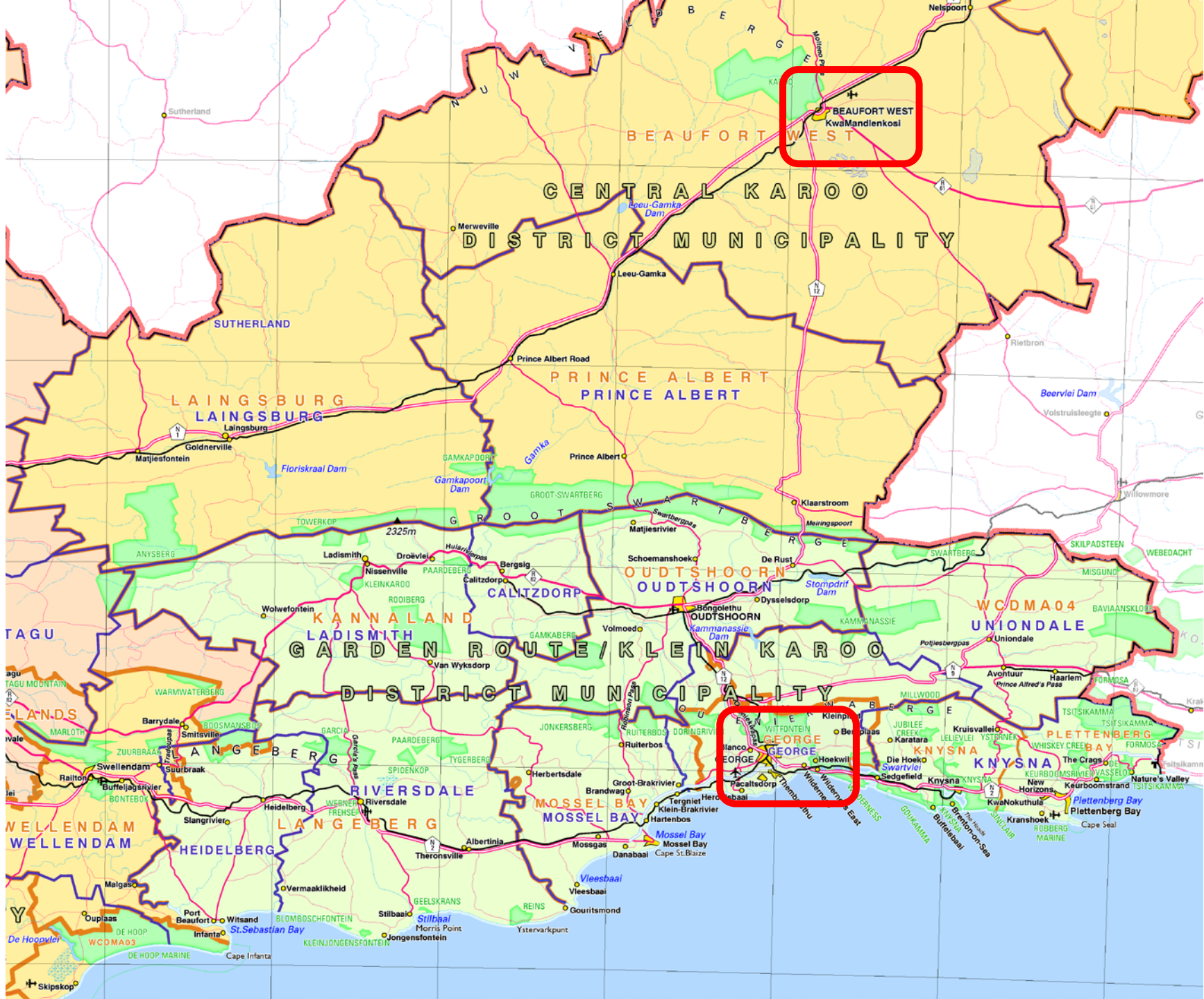
Disclaimer: The delineation of international and provincial boundaries on this map should not be considered as authoritative. Die afbakening van die internasionale en provinsiale grense op hierdie kaart moet nie as gesaghebbend beskou word nie.

Projection: Lambert's Conformal Conic Projection. Standard Parallels at 32° 00' S and 33° 00' S.

Published by the Chief Directorate: Surveys and Mapping, Private Bag 110, Bloemfontein. Gepubliseer by die Hoofdirektoraat: Opmetting en Kartering, Private Bag 110, Bloemfontein.

State Copyright © Staatsouteursreg





BEAUFORT WEST
KwaMandienkosi

GEORGE

CENTRAL KAROO
DISTRICT MUNICIPALITY

PRINCE ALBERT
PRINCE ALBERT

LAINGSBURG
LAINGSBURG

OUDTSHOORN
OUDTSHOORN

KANNANLAND
GARDEN ROUTE / KLEIN KAROO
DISTRICT MUNICIPALITY

WCDMA04
UNIONDALE

TAGU

ELANDS

WELLENDAM
WELLENDAM

RIVERSDALE
LANGEBERG

MOSSSEL BAY
MOSSSEL BAY

KNYSNA
KNYSNA

PLETTENBERG
PLETTENBERG BAY

HEIDELBERG

HEIDELBERG

St. Sebastian Bay

Skipskop

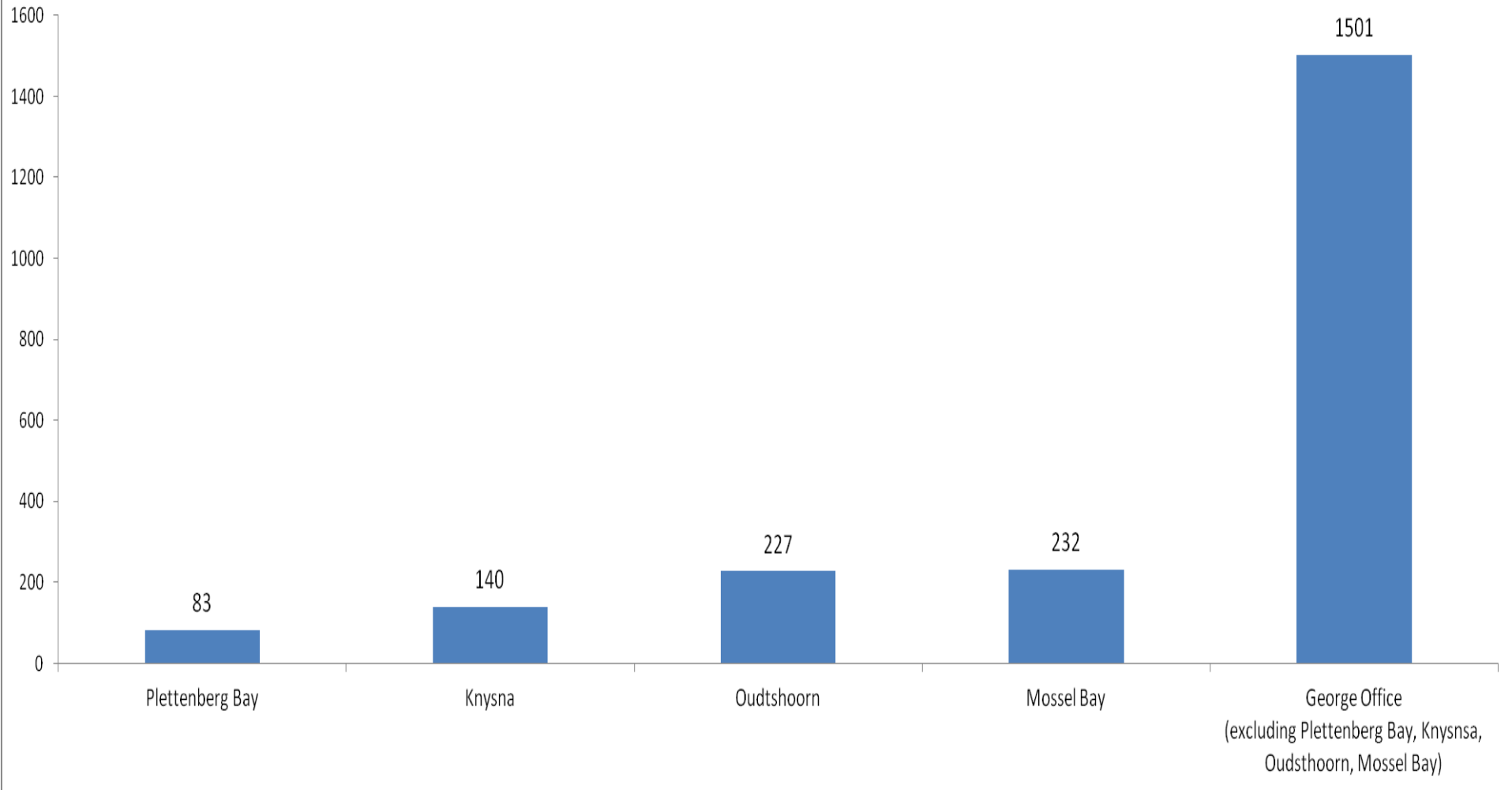
Parow



George and the surroundings



NUMBER OF STUDENTS



Total estimate of above 30 000 students

Dream the impossible – Go big or stay home!



“Because of the ODL nature of Unisa, there are no boundaries” (Focus, August 2012)



Spaces are themselves agents for change. Changed spaces will change practice. (JISC, 2007)

What is in the name?

- **Electronic Library**
- **Digital Library**
- **Library Commons**
- **Information Commons**
- **Knowledge Commons**
- **Cultural Commons**
- **Learning Commons**



Reasons

- **Signal to students in remote areas**
- **Competitiveness and welcoming environment**
- **Modular and multi-functional facility**
- **Optimal use of physical spaces**
- **Supplement the **Mobile Bus****
- **Burden on public libraries**

Reasons

- **George a strategic growth point**
- **Equivalent on-campus services**
- **Guinea-pig for non-print collection**
- **Success rate**



Lippincott's model of evaluation

- **Extensiveness**
- **Efficiency**
- **Effectiveness**
- **Service quality**
- **Usefulness**
- *Equity*



Lippincott's model - modified

- *Positive student experience*
- *Student success*
- *Purposeful learning*



Resources & facilities



- **Laptops or thin-clients**
- **Newspaper Lounge**
- **Movable tables**
- **Individual carrels**
- **Printing facilities**
- **Training/seminar room/board room**
- **Quiet study area**
- **Group study/discussion areas**
- **RFID**
- **Electronic smart-glass**
- **Wi-Fi connectivity**

Staffing requirements

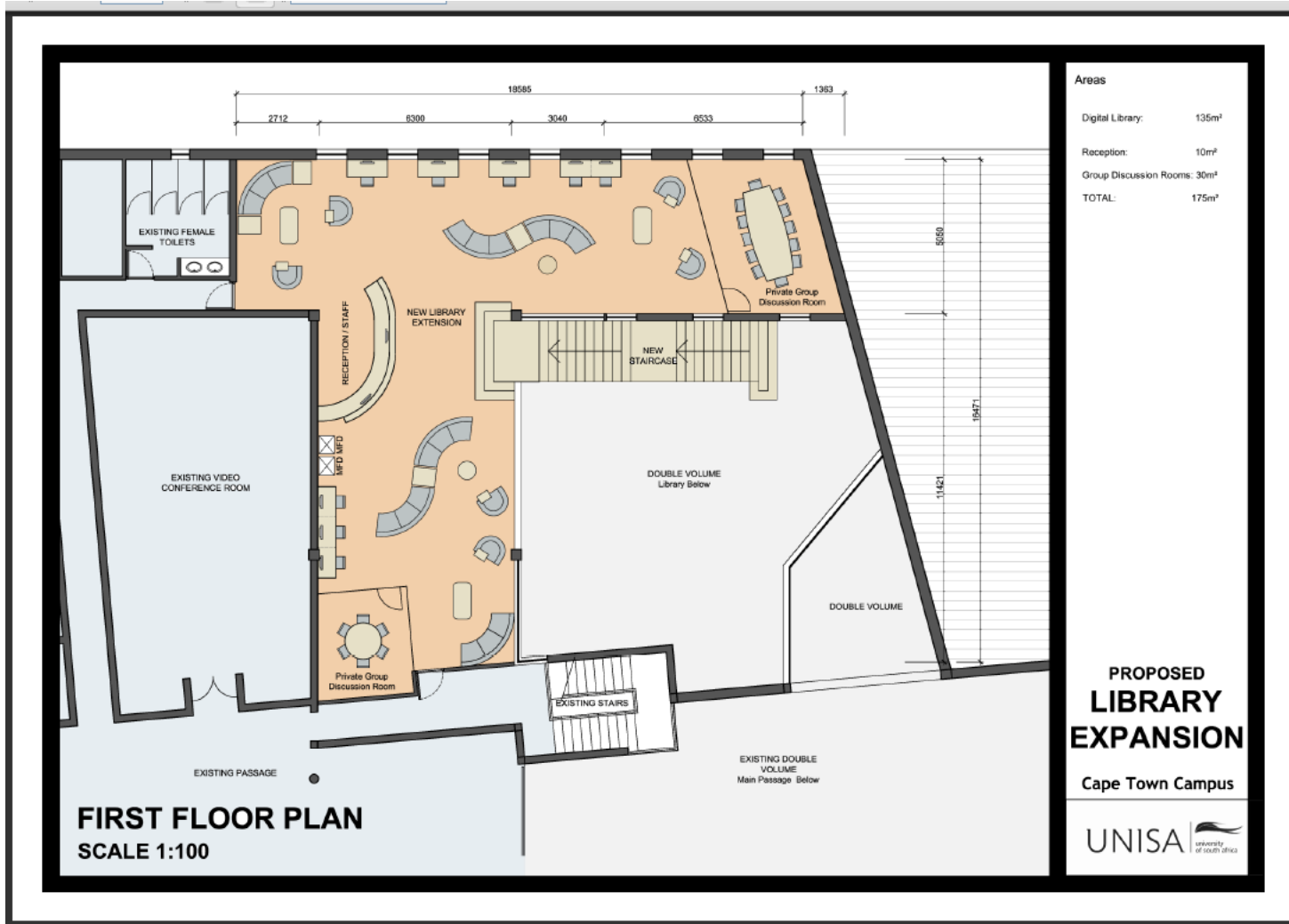
- **Branch Librarian**
- **Junior Branch Librarian**
 - *Strong IT skills*
 - *People skills*
 - *Willingness to serve*
 - *Unisa experience*
 - *Research methodology skills*
 - *Writing skills*



Internet Access & Supervision

- **Customised Internet**
- **Open Educational Resources (OER)**
- **Open Access Resources**

The Plan



Planning and Implementation plans

- **Planning Committee**
- **Stakeholders**
- **Needs analysis**
- **Hybrid and phasing out**



Communication & Marketing



Challenges to the dream

- **Marketing and educating about e-content**
- **Rented space in George**
- **New library in 2015 on the Parow campus**
- **Unavailability of prescribed books online**
- **Prescribed books versus reading widely**
- **Competent staff with technological expertise**
- **Internet access and supervision**
- **Technological support especially in George**
- **Ongoing software upgrades and purchases**
- **Loanable technology**





Arniston 2011