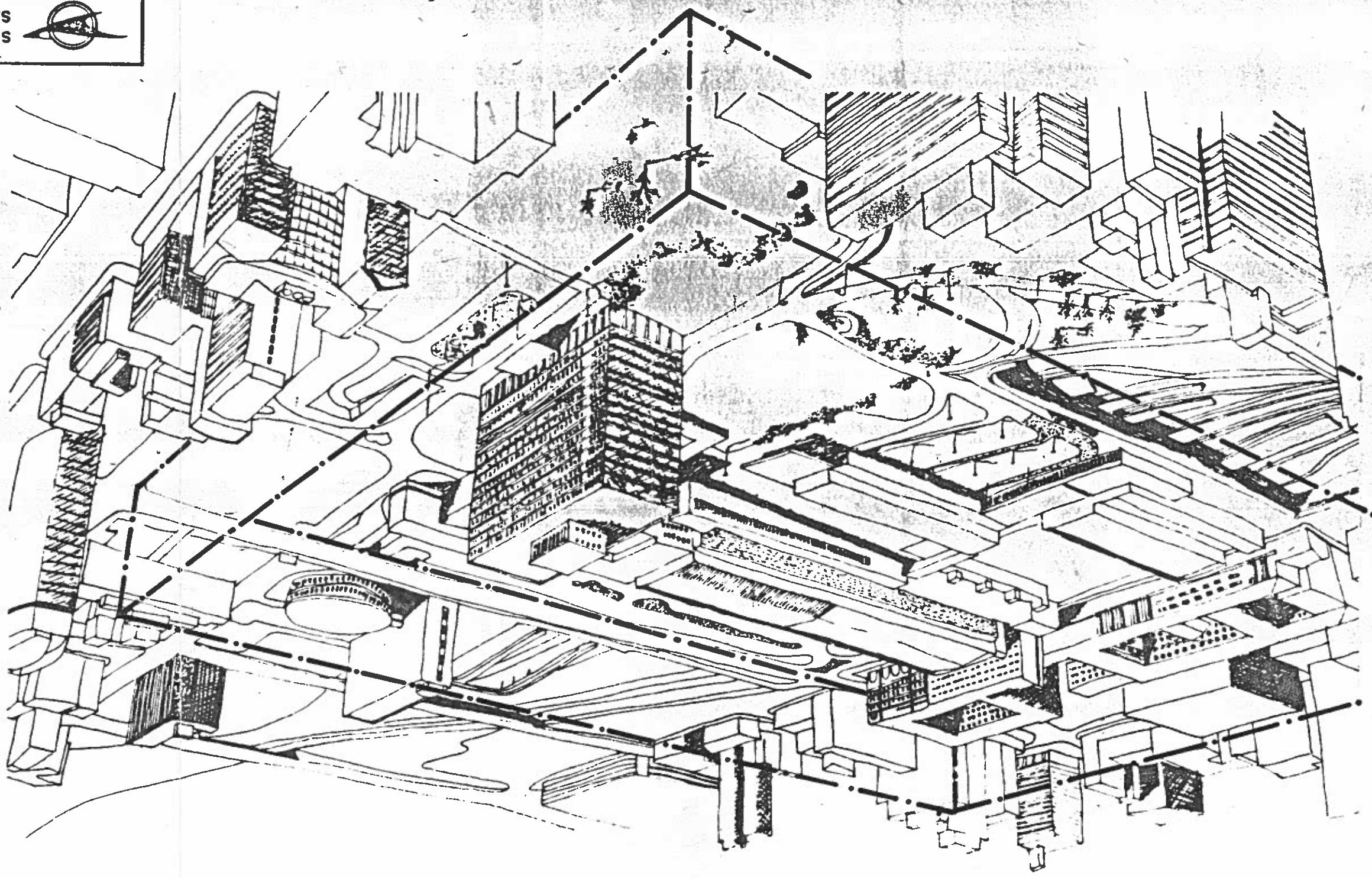
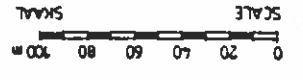
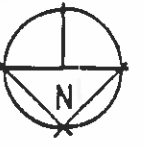


JOHANNESBURG
STATION / STASIE

S.A. TRANSPORT SERVICES
S.A. VERVOERDIENSTE

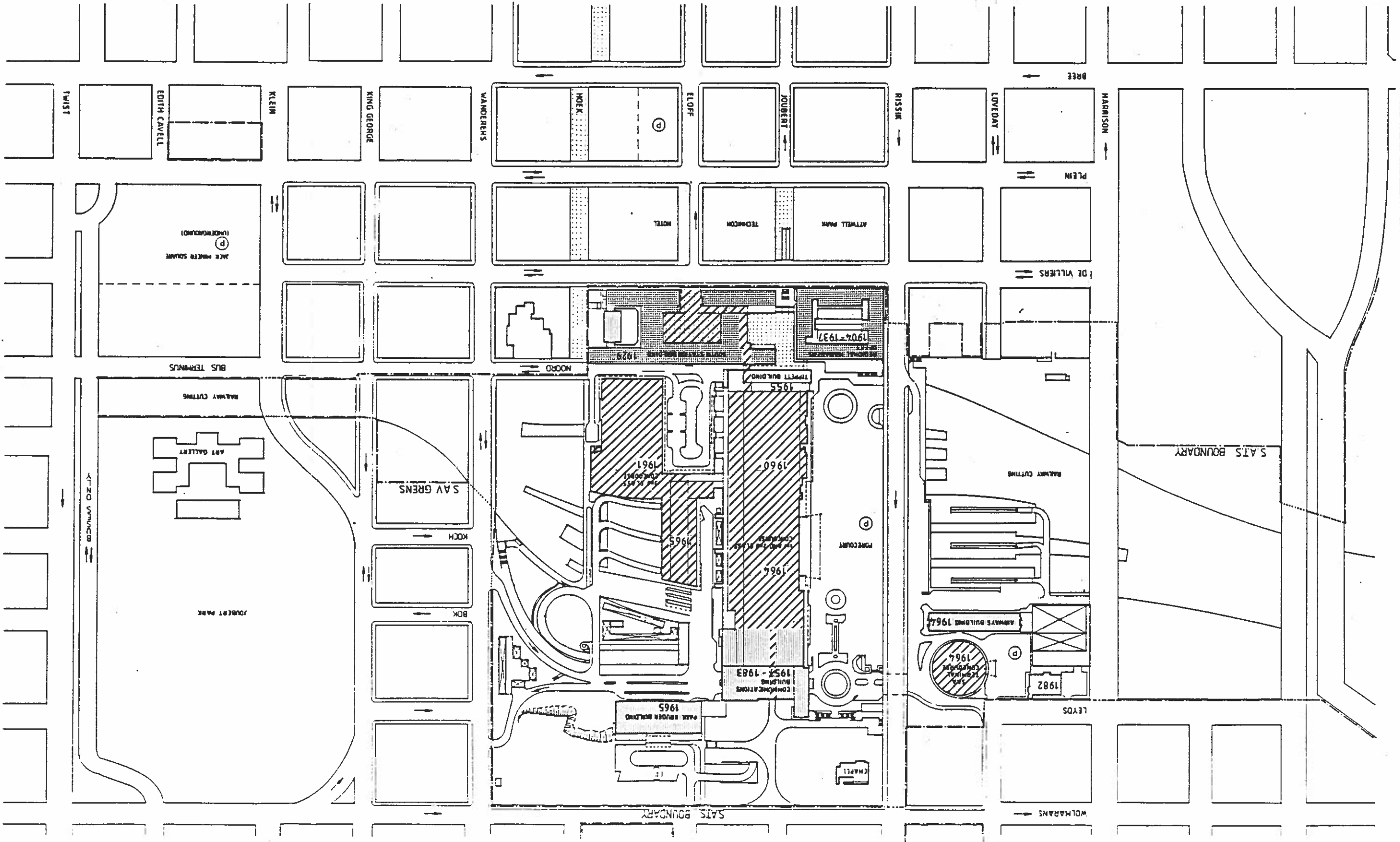




OFFICE
HISTORIC: SHOULD BE PRESERVED.
COVERED PUBLIC AREAS.

LEGEND

- COVERED PUBLIC AREAS.
- HISTORIC: SHOULD BE PRESERVED.
- OFFICE



S.A. TRANSPORT SERVICES
S.A. VERVOERDIENSTE

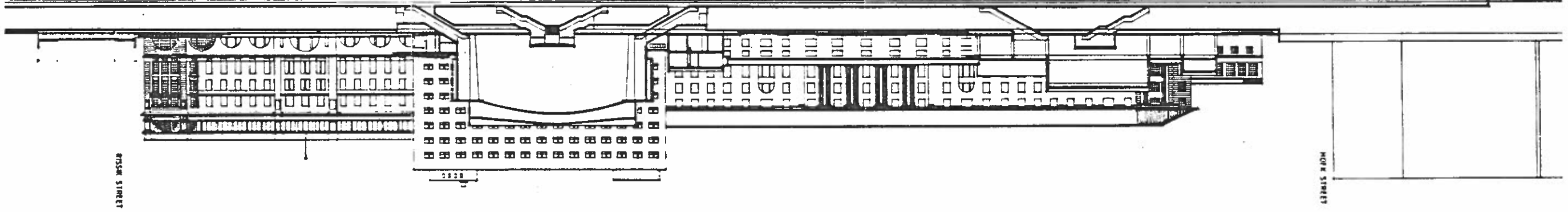


JOHANNESBURG
STATION / STASIE

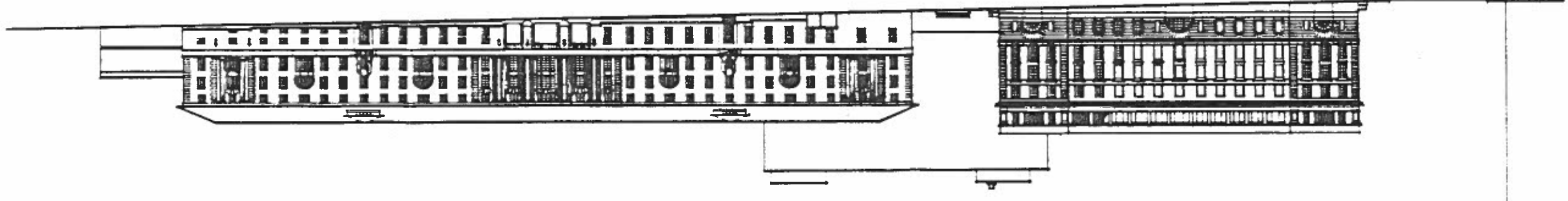
EXISTING BUILDINGS (2)

Figure C


SECTION THROUGH STATION LOOKING SOUTH



ELEVATION TO DE VILLIERS STREET.

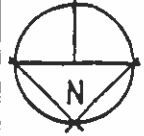


S.A. TRANSPORT SERVICES
S.A. VERVOERDIENSTE




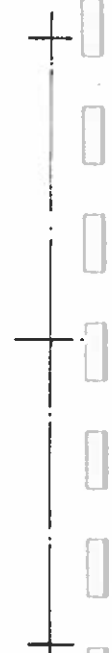
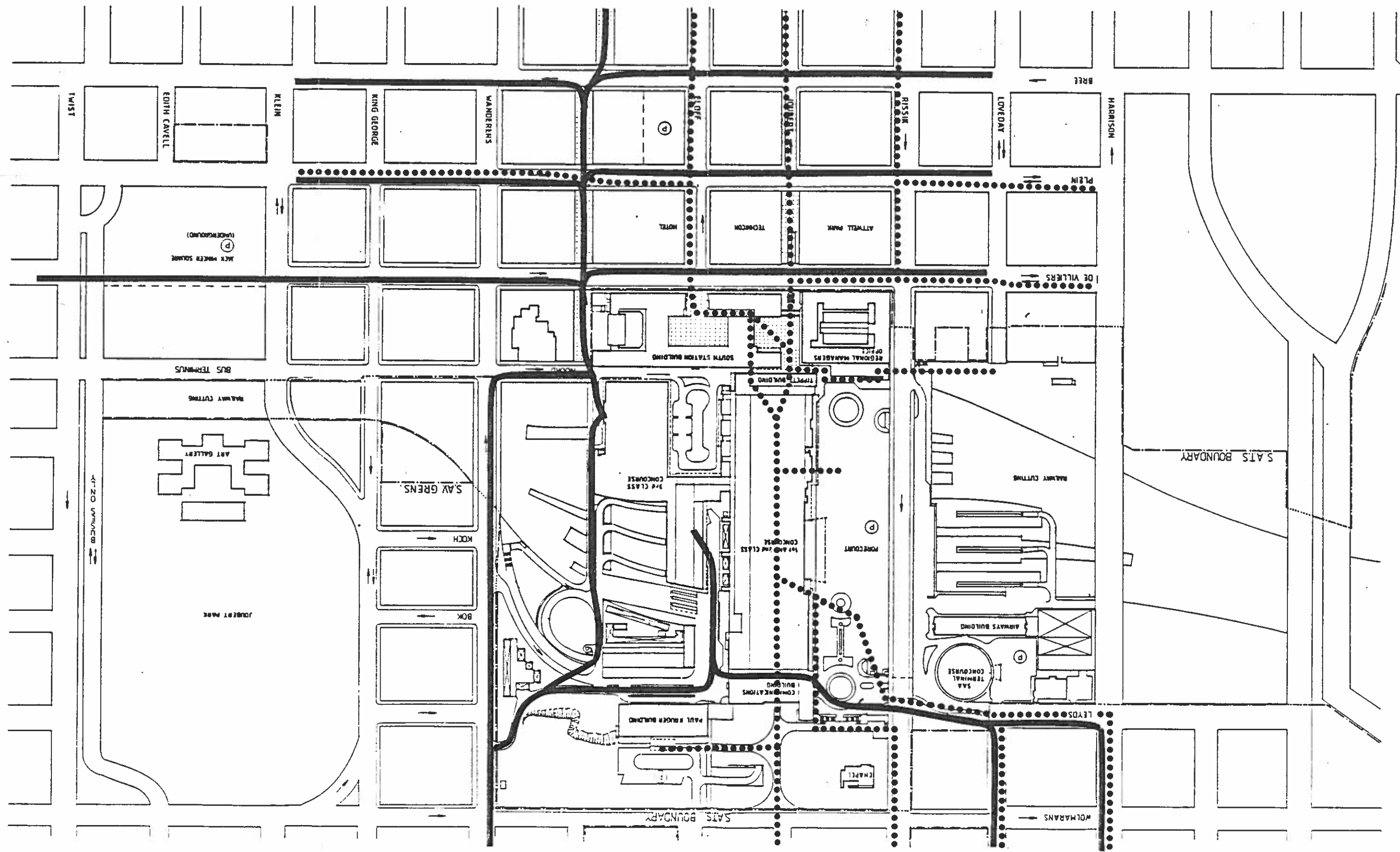
JOHANNESBURG
STATION / STASIE

EXISTING PEDESTRIAN
CIRCULATION Figure D




1st AND 2nd CLASS RAIL COMUTERS AND
THROUGH TRAFFIC (MAINLY WHITES)
3rd CLASS RAIL COMUTERS AND
THROUGH TRAFFIC (MAINLY BLACKS)

LEGEND

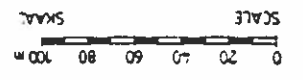
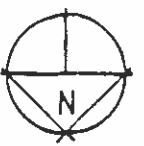



WALKING DISTANCES (1)
Figure E.

S.A. TRANSPORT SERVICES
S.A. VERVOERDIENSTE

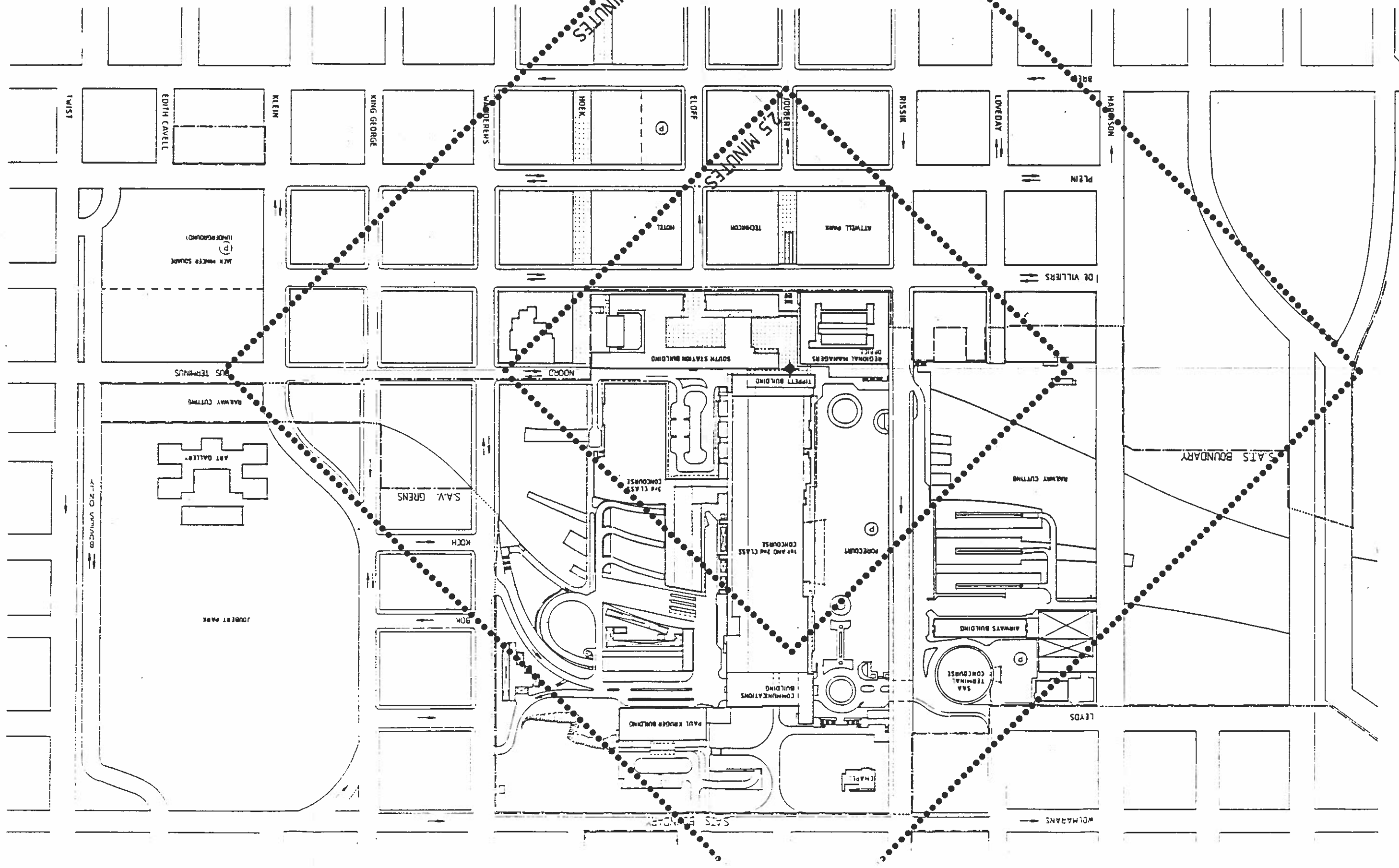


JOHANNESBURG
STATION / STASIE

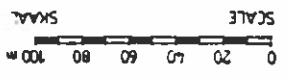


LEGEND


WALKING ISOCHRONES (1st & 2nd class)



JOHANNESBURG
 S.A. TRANSPORT SERVICES
 S.A. VERVOERDIENSTE

LEGEND
 WALKING ISOTHERONES (3rd class)



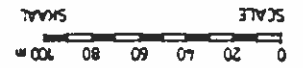
WALKING DISTANCES (2)
 Figure F.

S.A. TRANSPORT SERVICES
S.A. VERVOERDIENSTE

JOHANNESBURG
STATION / STASIE

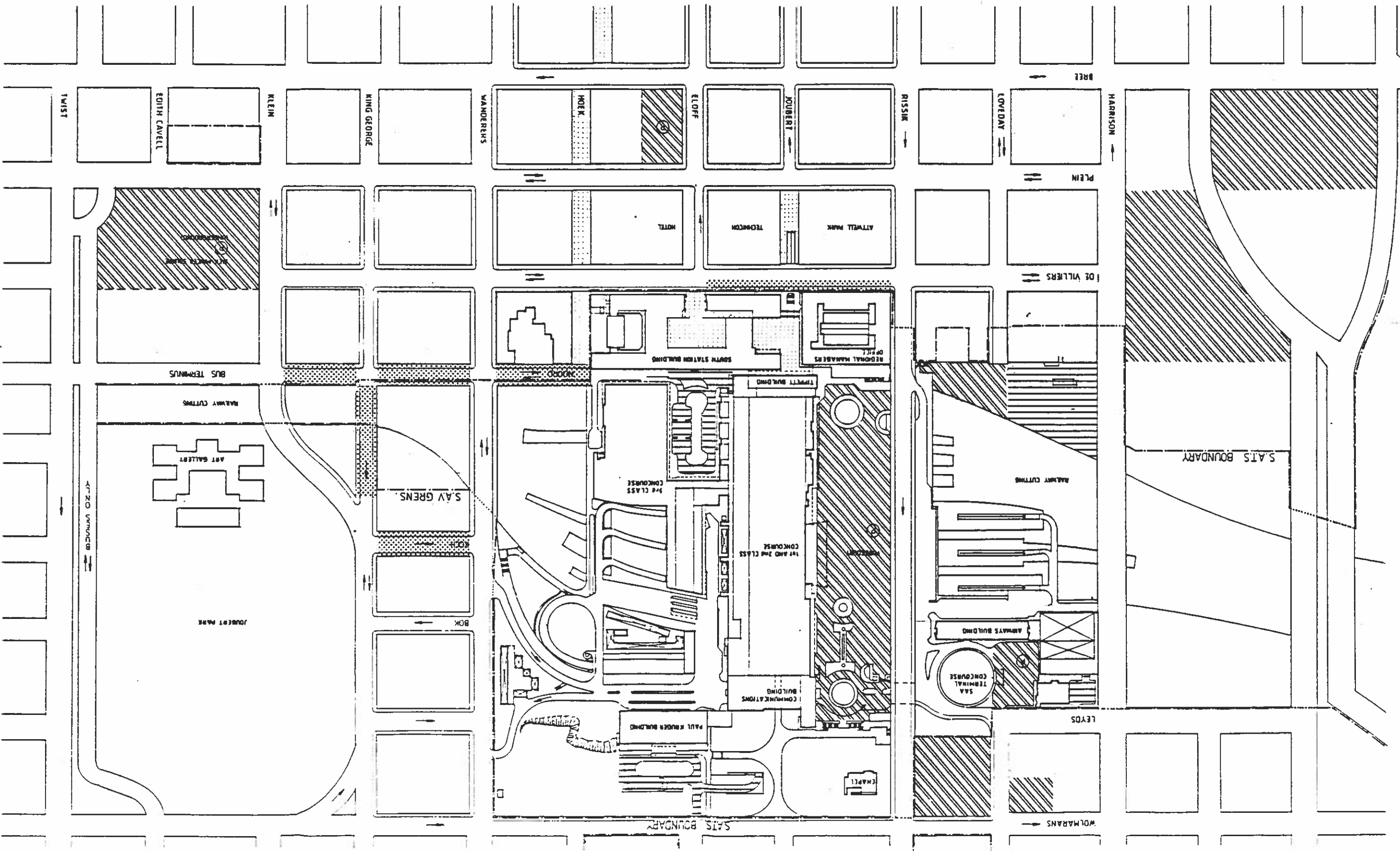
Figure H.

PARKING AREAS




LEGEND

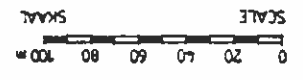
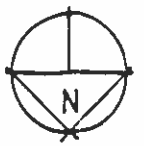
- S.A.T.S. CAR PARK. (Horizontal lines)
- MUNICIPAL AND PRIVATE CAR PARKS. (Diagonal lines)
- TAXI RANKS. (Dotted pattern)



JOHANNESBURG
S.A. TRANSPORT SERVICES
S.A. VERVOERDIENSTE



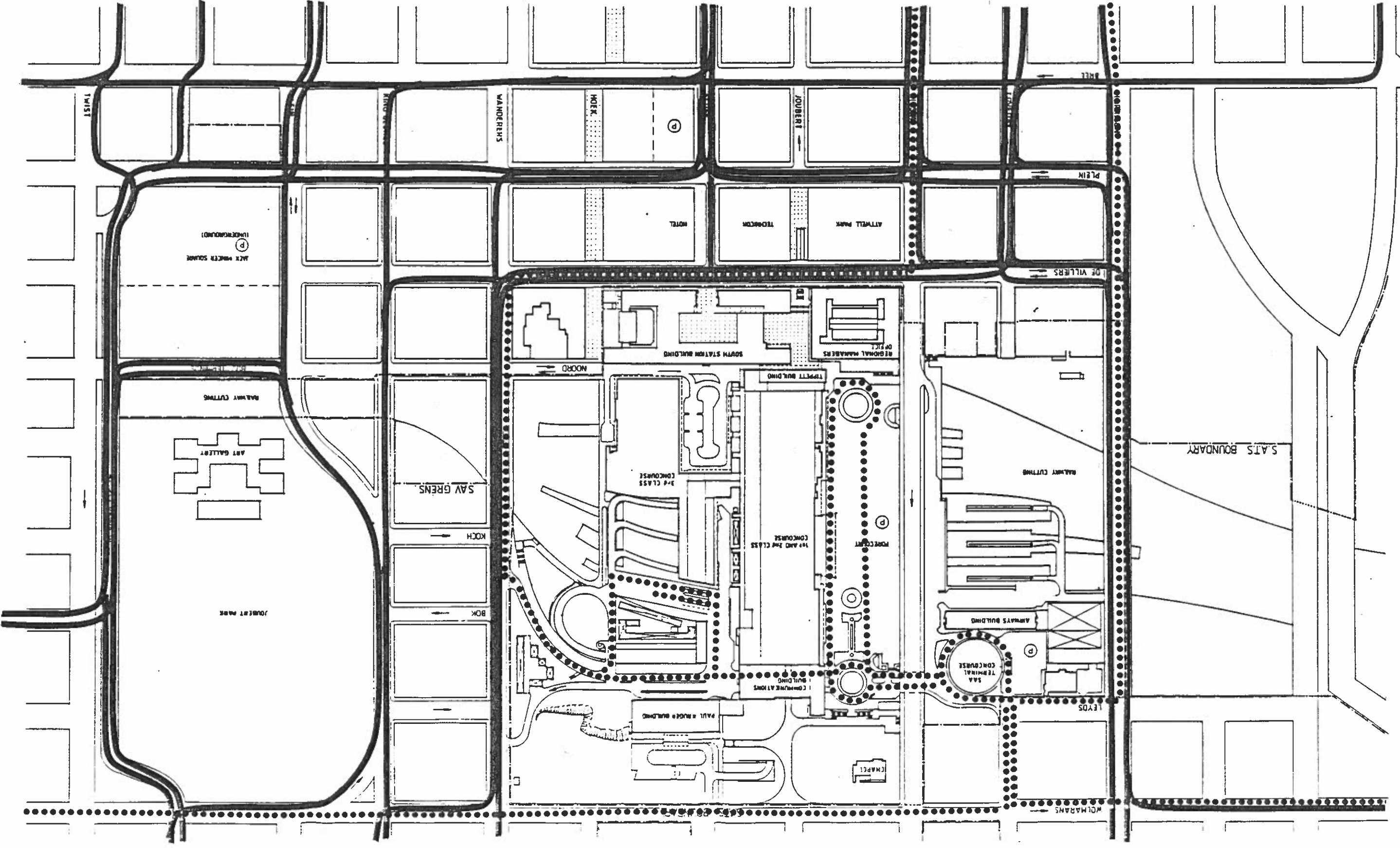
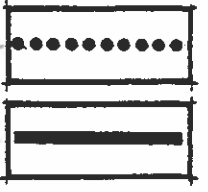
BUS ROUTES.
Figure J.



S.A.T.S. ROAD MOTOR TRANSPORT SERVICE.

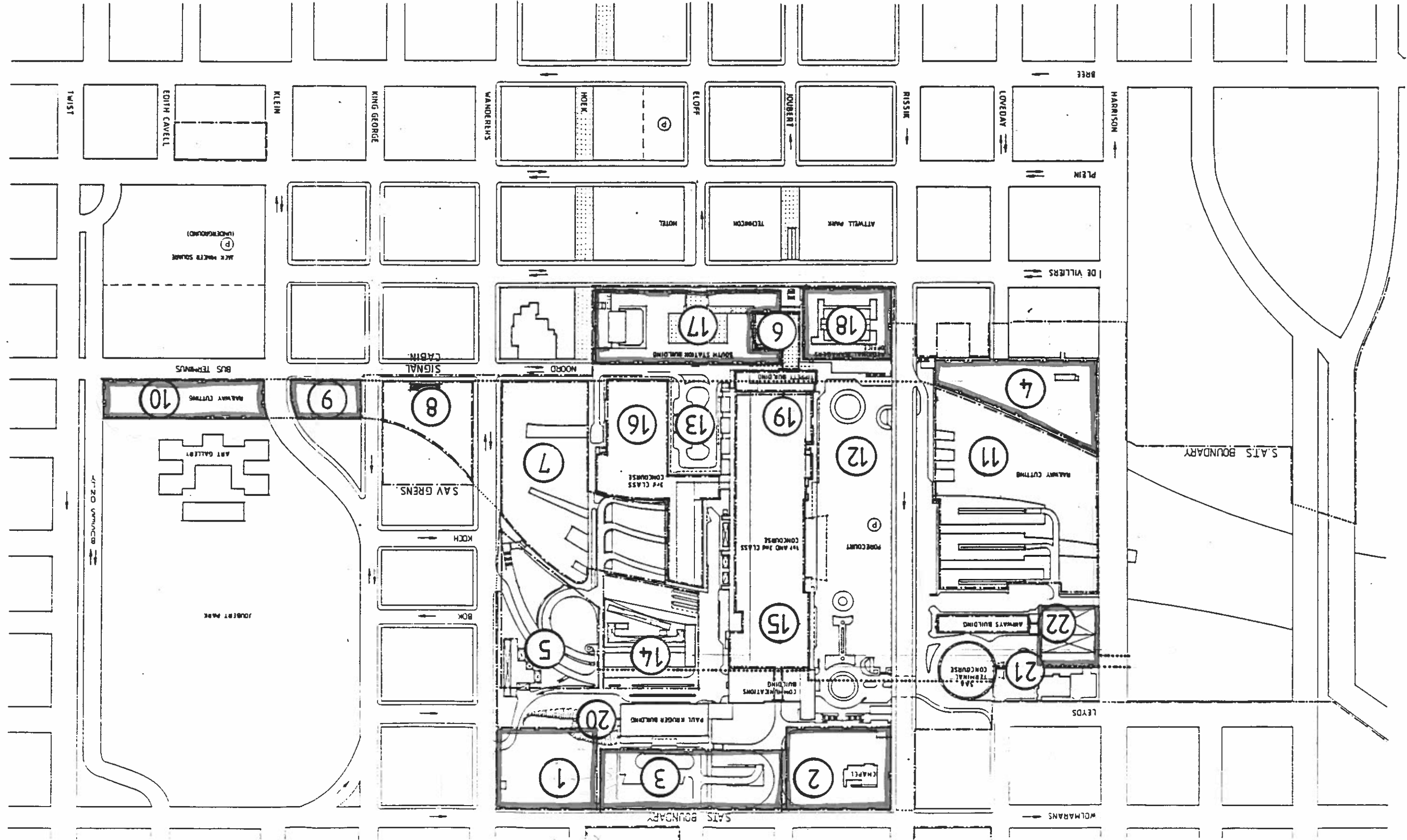
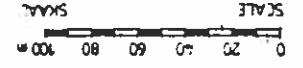
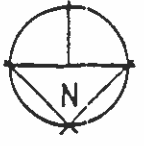
JOHANNESBURG MUNICIPAL AND
PUTCO BUS SERVICES.

LEGEND



S.A. TRANSPORT SERVICES
S.A. VERVOERDIENSTE

JOHANNESBURG
STATION / STASIE



LEGEND

1-6 UNCOVERED AREAS.


7-11 AIR SPACE OPPORTUNITIES.

12-14 AIR SPACE (ALREADY DECKED).

15-22 BUILDINGS FOR REHABILITATION.

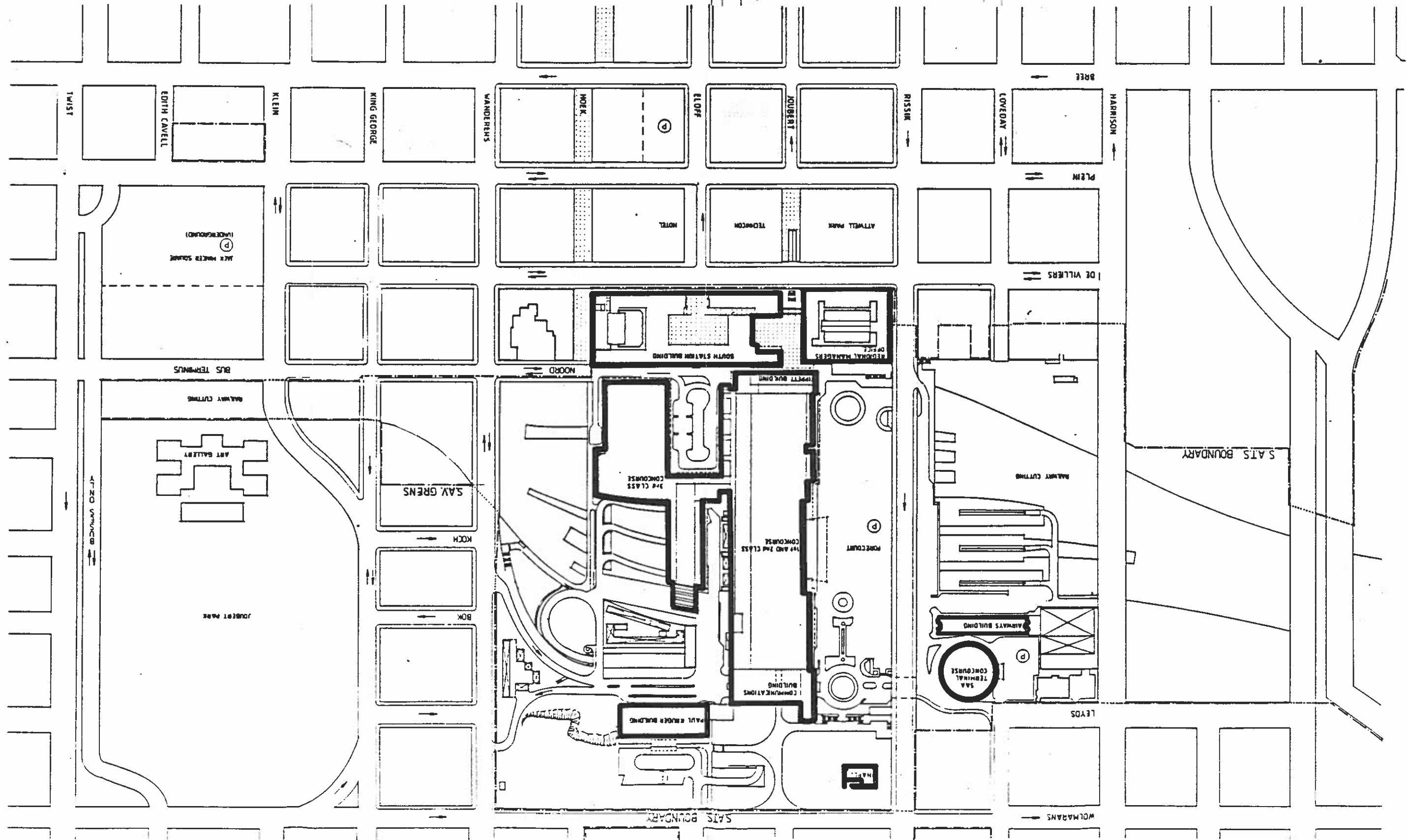
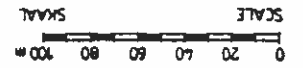
DEVELOPABLE AREAS.
 Figure K.

S.A. TRANSPORT SERVICES
S.A. VERVOERDIENSTE



JOHANNESBURG
STATION / STASIE

BUILT AREAS.
Figure L.



LEGEND

13	070	m ²	AIRWAYS BUILDING
3	272	m ²	ROTUNDA
38	304	m ²	PAUL KRUGER BUILDING
13	893	m ²	1st & 2nd CLASS CONCOURSE
8	600	m ²	3rd CLASS CONCOURSE AND BUS FACILITY
30	054	m ²	REGIONAL MANAGERS' OFFICE
32	060	m ²	SOUTH STATION BUILDING
8	490	m ²	CHAPEL
8	344	m ²	TIPPETT BUILDING
177	587	m ²	TOTAL

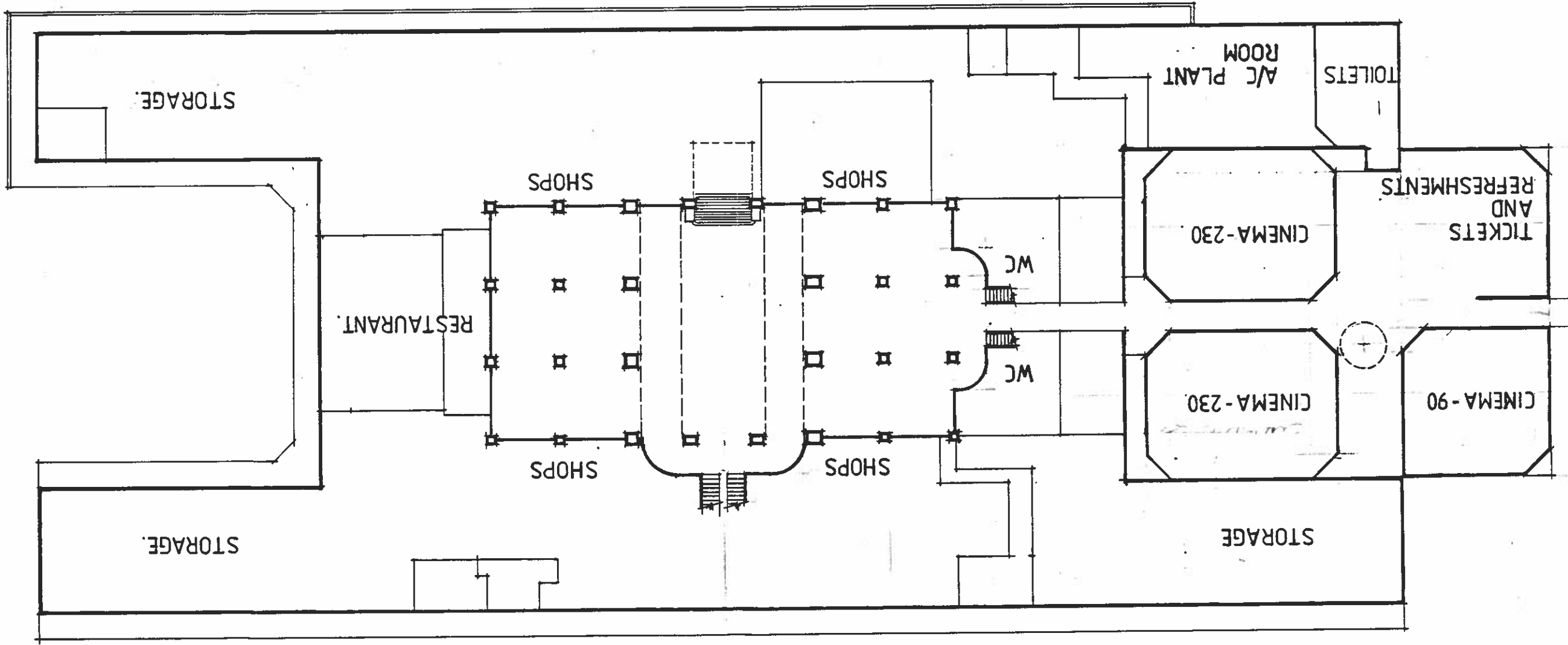
SOUTH STATION BUILDING
ACCOMMODATION
SHOPS, CINEMAS AND RESTAURANT

Figure M



BASEMENT FLOOR LAYOUT
SCALE 1:500

DE VILLIERS STREET



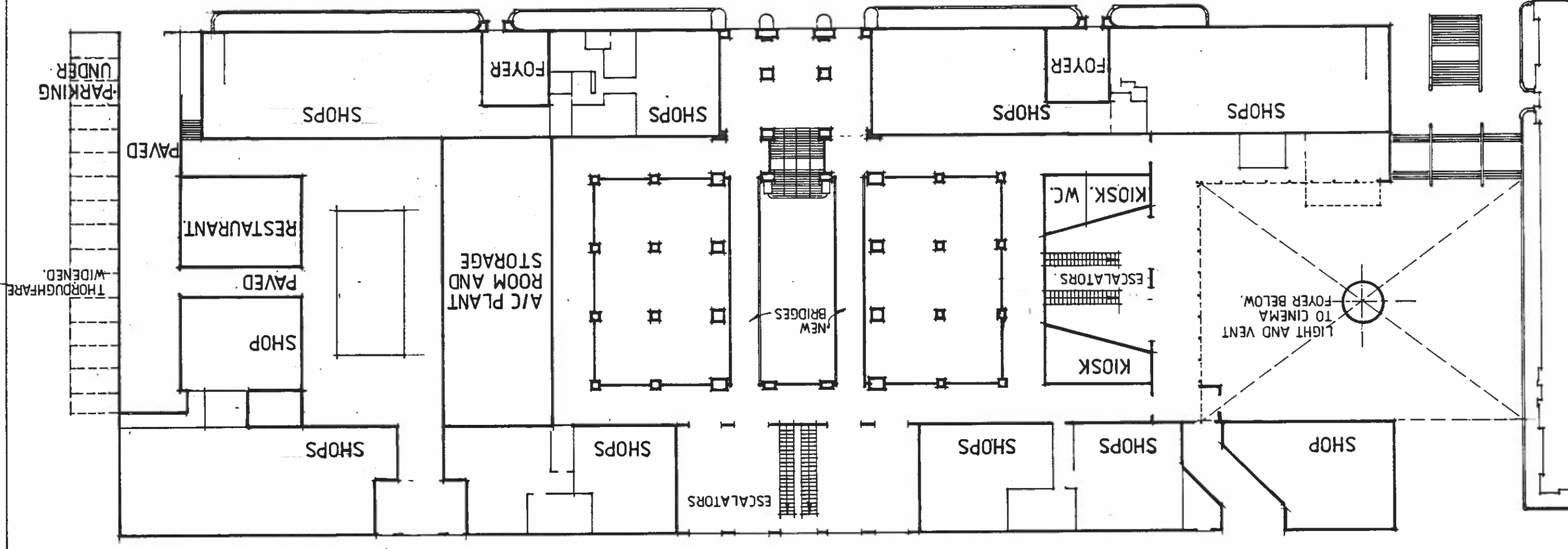
SOUTH STATION BUILDING
ACCOMMODATION
SHOPS AND RESTAURANTS

Figure N.



GROUND FLOOR LAYOUT.
SCALE 1:500

DE WILLIERS STREET



UNDER PARKING

PAVED

RESTAURANT

PAVED

SHOP

A/C PLANT
ROOM AND
STORAGE

NEW
BRIDGES

ESCALATORS

SHOPS

SHOPS

SHOP

KIOSK, WC

KIOSK

ESCALATORS

LIGHT AND VENT
TO CINEMA
FOYER BELOW

SHOPS

FOYER

SHOPS

SHOPS

FOYER

SHOPS

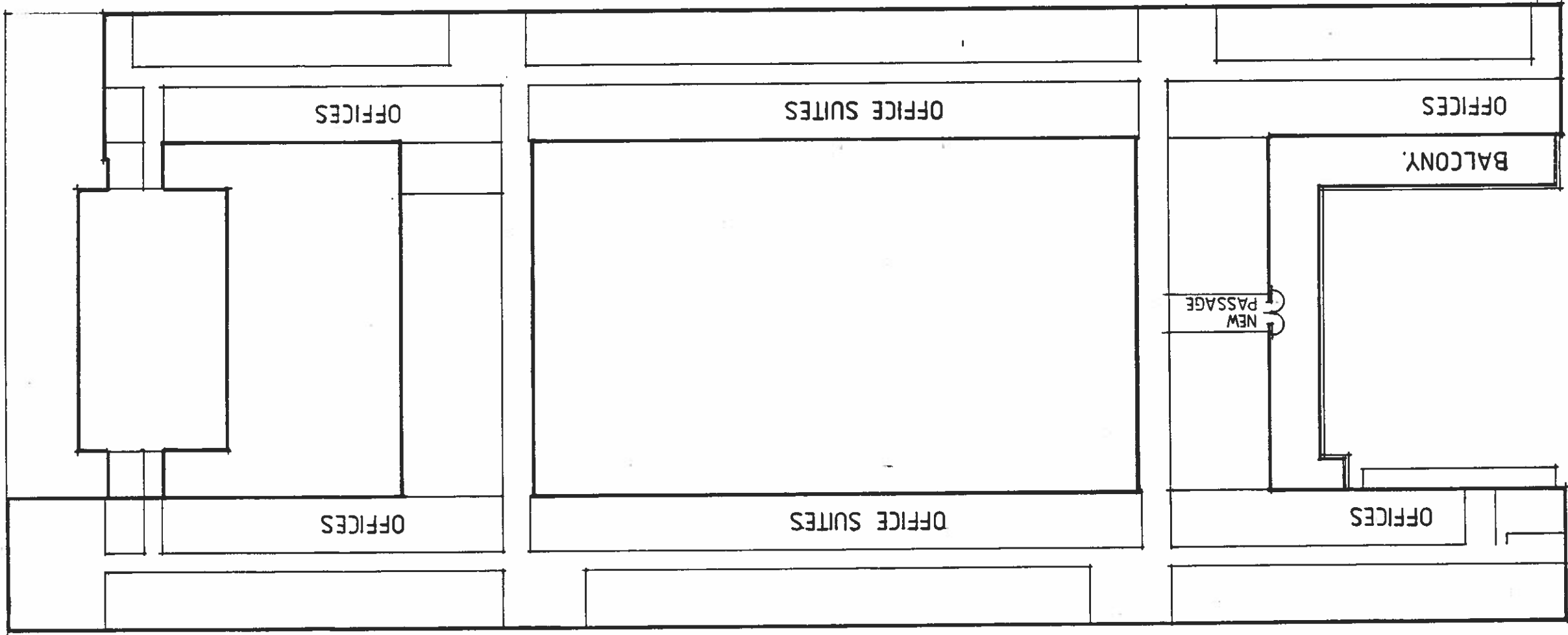
SOUTH STATION BUILDING
ACCOMMODATION
OFFICE SUITES

Figure 0.



FIRST FLOOR LAYOUT.
SCALE 1:500

DE VILLIERS STREET



PROPOSED MODAL INTERCHANGE

PLAN

FIRST AND SECOND CLASS CONCOURSE
EERSTE EN TWEEDEKLAS BINNEPLEIN

MAIN LINE CONCOURSE
HOOFLYBINNEPLEIN

THIRD CLASS CONCOURSE (SUBURBAN)
DERDEKLAS BINNEPLEIN (VOORSTEDELIKE)

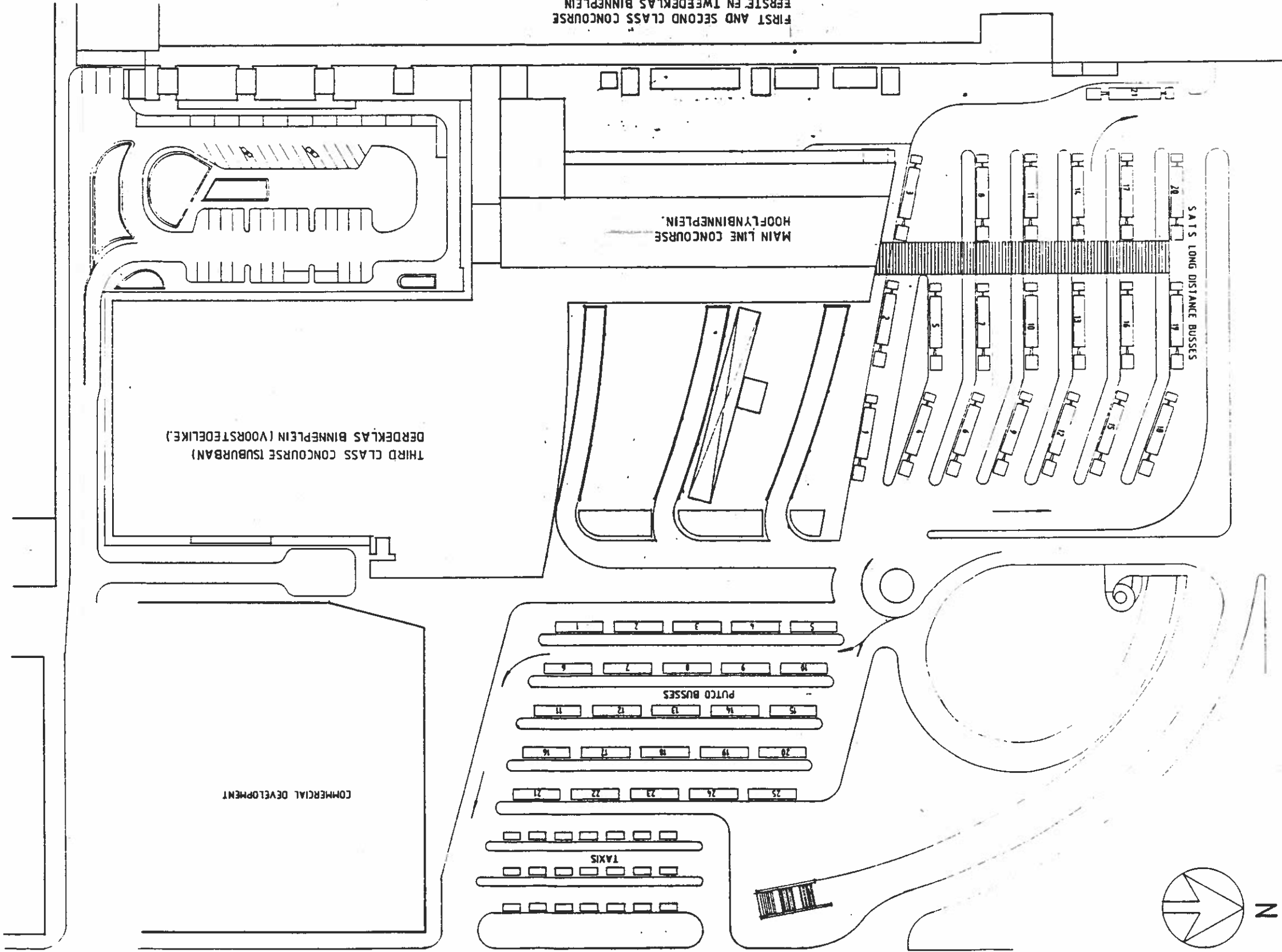
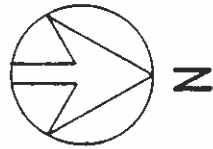
S.A.T.S. LONG DISTANCE BUSES

PUTCO BUSES

TAXIS

COMMERCIAL DEVELOPMENT

WANDERERS STREET



NO.	DESCRIPTION	DATE	BY
1	ISSUED FOR TENDERS	1974	...
2	REVISED
3
4
5
6
7
8
9
10
11
12
13
14
15
16
17
18
19
20
21
22
23
24
25
26
27
28
29
30
31
32
33
34
35
36
37
38
39
40
41
42
43
44
45
46
47
48
49
50

SAS AFDeling Wes-Transvaal
WESTERN TRANSVAL SYSTEM

JOHANNESBURG
3 de KLAS BUSTERMINUS
KONSEP 2

3 rd CLASS BUS TERMINUS
KONSEP 2

Figure P.

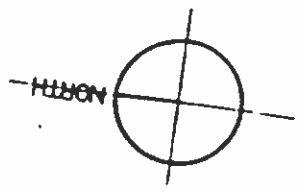
ALGEMEEN GENERAL

NO.	DESCRIPTION	DATE	BY
1	ISSUED FOR TENDERS	1974	...
2	REVISED
3
4
5
6
7
8
9
10
11
12
13
14
15
16
17
18
19
20
21
22
23
24
25
26
27
28
29
30
31
32
33
34
35
36
37
38
39
40
41
42
43
44
45
46
47
48
49
50

WYSKINGS AMENDMENTS

R DOWNS

PLAZA LEVEL



RISSIK STREET

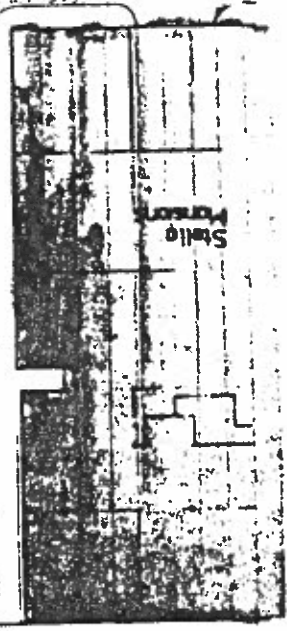
Main Entrance



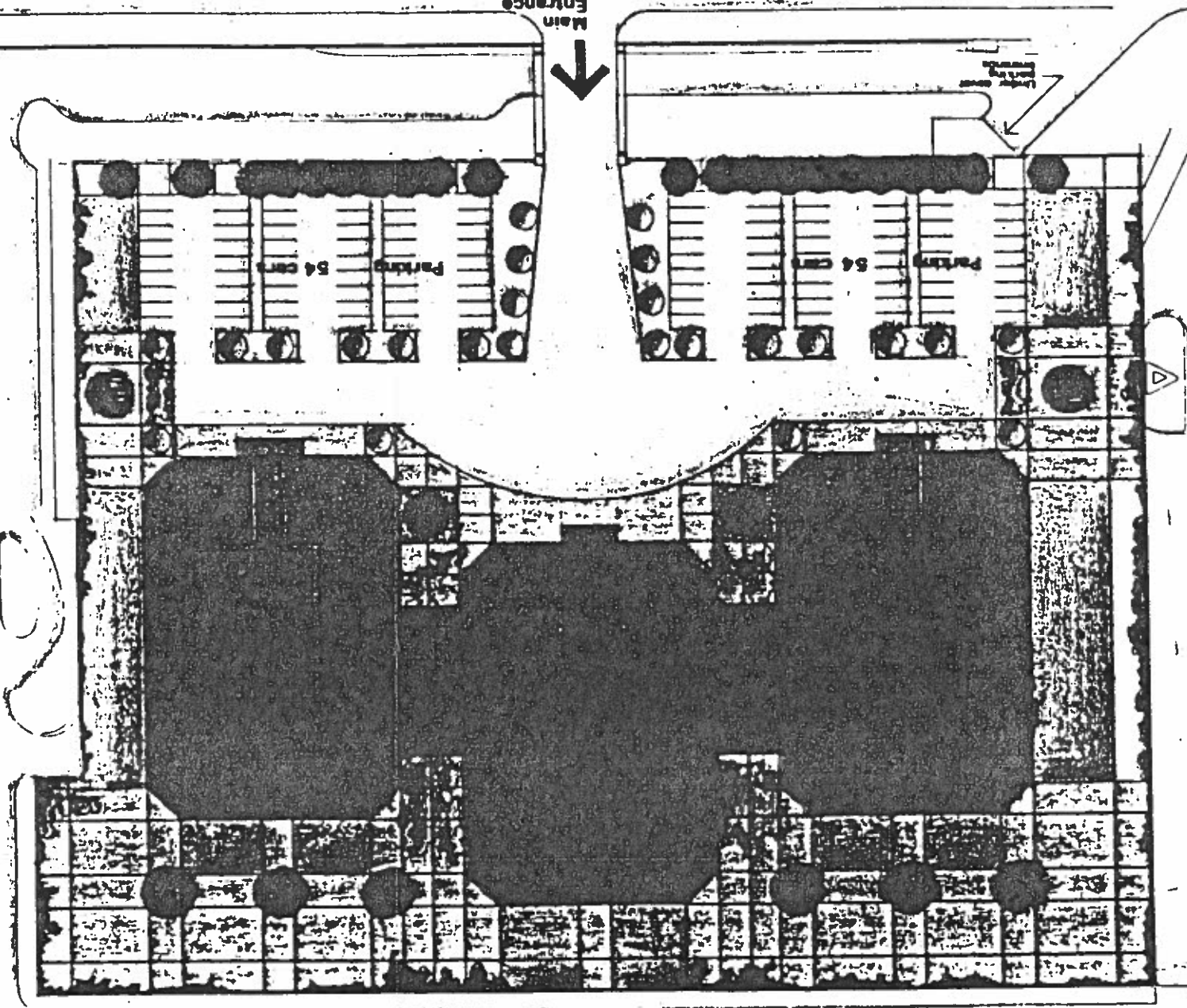
Locker Room



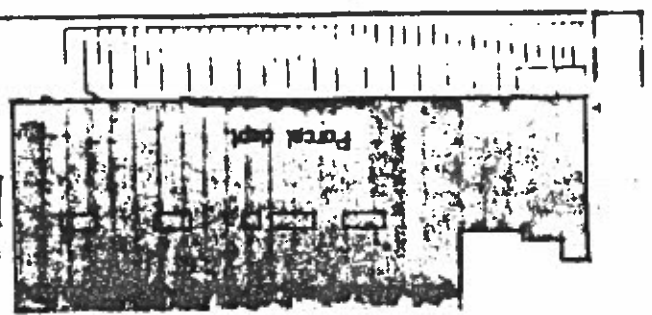
Lovely street



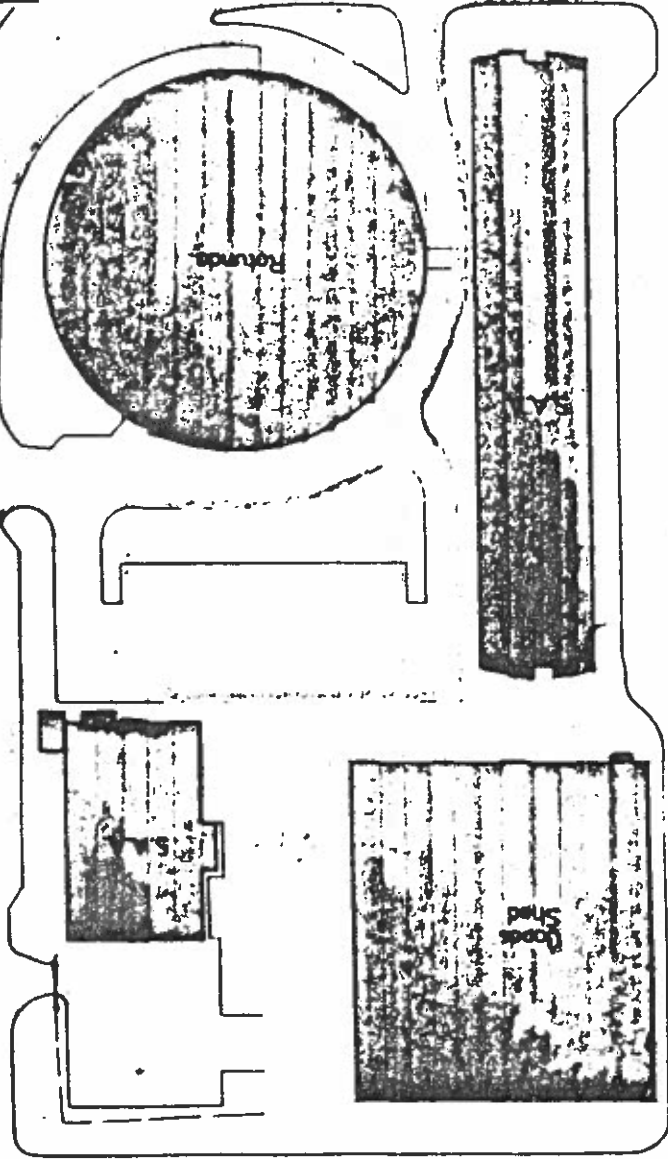
Stall



HARRISON ROAD



Fence



Rotunda

Goods Shed

Figure Q.

PROJECT - BIG BEAR
JOHANNESBURG

Louis Kardi Architects

Scale: 1:500
Date: 1998

Figure R.

OCTOBER 1984

DATE

SCALE 1:500

SKETCH PLANS LEVEL 2

Centenary Centre RETAIL DEVELOPMENT

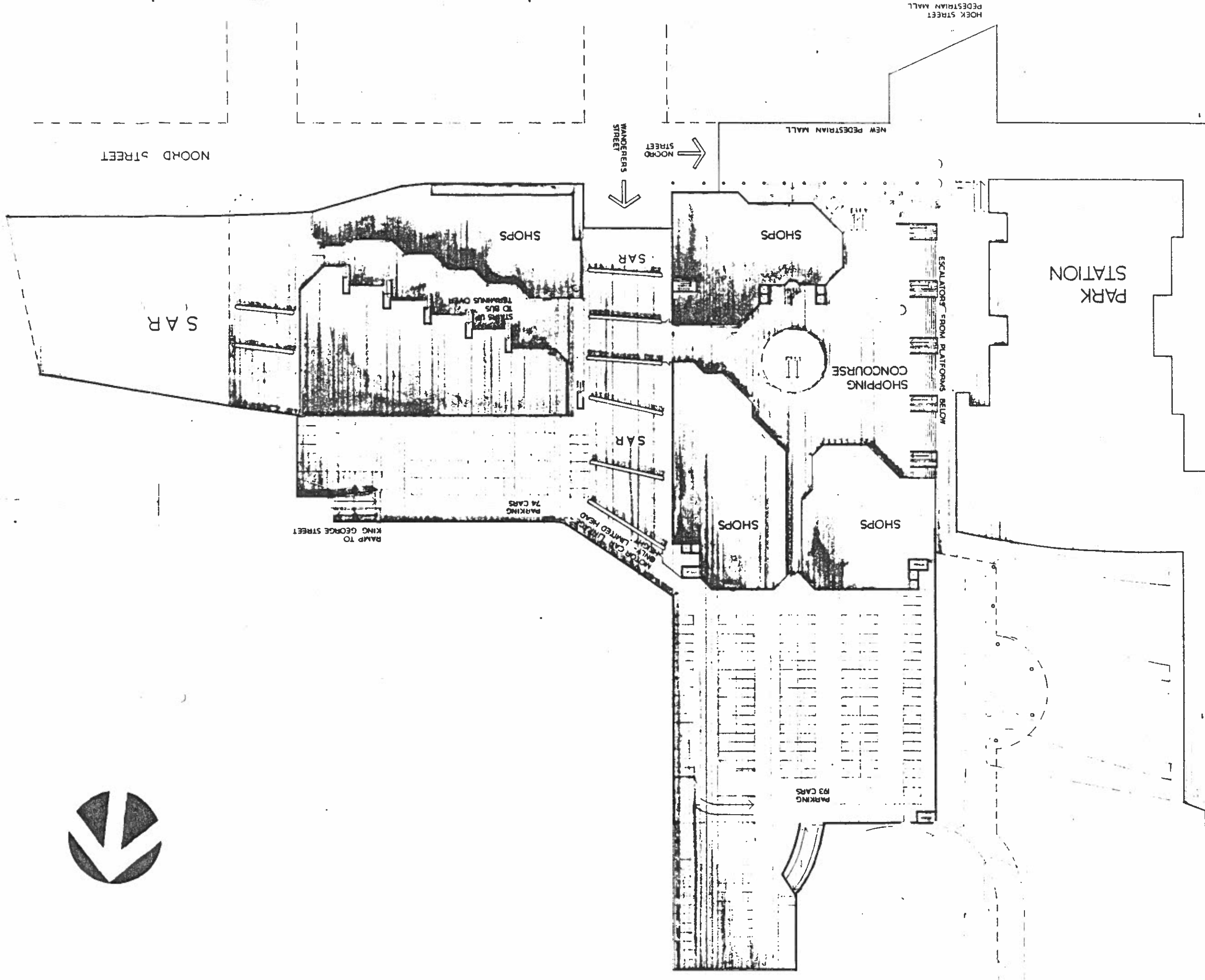
NO.	DATE	DETAILS	AMENDMENTS

HALFORD

ARCHITECTS URBAN DESIGNERS CONSULTING ENGINEERS

7 JUNCTION AVE. PARKTOWN JOHANNESBURG

PO BOX 3119 BRAAMFONTEIN 2017 042-438778



NOTE: