

SOUTH AFRICAN RAILWAYS  
AIRWAYS AND  
HARBOURS

*Special Programme*  
OF  
INCLUSIVE  
TOURS

Radiating  
from  
Johannesburg

during 1936 and  
the early part  
of 1937

Issued by the Publicity and Travel  
Department, South African Rail-  
ways, Airways and Harbours



# Special Tours

in

## South Africa



THE Union's transport services by rail, road or air are co-ordinated under one department of state—the South African Railways, Airways and Harbours. Through the function of its Tourist Branch, the Railway Administration is in a position to make advance arrangements to meet the wishes of tourists desiring to visit any part of the Union and its adjacent territories. Among the travel high-lights thus brought within the easy reach of tourists are the Kruger National Park—the greatest natural zoo in the world—the Natal National Park in the Drakensberg Mountains, the numerous delightful seaside and inland holiday resorts, and the world-famous Victoria Falls, to mention but a few of the better known.

The suggested tours set out in this brochure radiate from Johannesburg, but can be combined with the inclusive tours from the coast to Johannesburg arranged for oversea visitors. Variations can be made to meet the special requirements of tourists travelling either individually or in parties.

Visitors are cordially invited to call at the office of the General Manager, Empire Exhibition Grounds, Milner Park, Johannesburg, or at any of the respective Tourist Offices enumerated on the last page, for full information concerning travel facilities in South Africa.



SOUTH AFRICAN RAILWAYS, AIRWAYS  
— AND HARBOURS —

★ SPECIAL  
PROGRAMME  
of  
Inclusive  
Tours

RADIATING FROM  
JOHANNESBURG

during 1936 and  
the early part  
of 1937





Rissik Street, Johannesburg.



A Native War Dance, Johannesburg.



Rail and Air in South Africa.

## NOTICES

EVERY EFFORT has been made to ensure accuracy in the compilation of this booklet, but the South African Railways Administration cannot accept responsibility for any loss or inconvenience arising from any change or alteration in the tours as a result of unforeseen circumstances, or from any other cause.

TICKETS are issued subject to Act No. 22 of 1916, as amended, and the regulations of the South African Railways, Airways and Harbours Administration.

THE ADMINISTRATION is, further, not liable for any loss, damage or injury sustained during that portion of the tour off the Administration's lines, for which it accepts no responsibility whatever. It acts merely as agent in arranging such portion.

THE INCLUSIVE FARES quoted cover first class rail travel, hotel accommodation, meals and bedding on trains, transfers to and from hotels and motor drives by private car.



Johannesburg Station.



In the Kruger National Park.



At a Zulu Wedding.



Lions in the Kruger National Park.

### TOUR A.

JOHANNESBURG TO NELSPRUIT AND RETURN TO JOHANNESBURG, WITH ONE-DAY MOTOR DRIVE IN THE KRUGER NATIONAL PARK.

Day.	Time.	Itinerary.
1st day	9.45 p.m.	DEPART JOHANNESBURG.
2nd „	7.19 a.m.	ARRIVE NELSPRUIT. Motor drive in the Game Reserve.
3rd „	10.14 p.m. 7.23 a.m.	ARRIVE JOHANNESBURG. Entrain for Johannesburg.

**Inclusive cost for parties of :**

	One.	Two (each).	Three (each).	Four (each).
	£ s. d.	£ s. d.	£ s. d.	£ s. d.
November to May.....	10 11 0	7 7 0	6 6 0	5 17 0
June to October.....	11 0 0	8 0 0	6 17 0	6 6 0

### TOUR B.

JOHANNESBURG TO NELSPRUIT AND RETURN TO JOHANNESBURG, WITH A TWO-DAY MOTOR DRIVE IN THE KRUGER NATIONAL PARK.

Day.	Time.	Itinerary.
1st day	9.45 p.m.	DEPART JOHANNESBURG.
2nd „	6.40 a.m.	ARRIVE NELSPRUIT. Two-day motor drive in the Game Reserve.
3rd „	10.14 p.m.	Entrain for Johannesburg.
4th „	7.23 a.m.	ARRIVE JOHANNESBURG.

**Inclusive cost for parties of :**

	One.	Two (each).	Three (each).	Four (each).
	£ s. d.	£ s. d.	£ s. d.	£ s. d.
November to May.....	15 8 0	10 16 0	9 1 0	8 8 0
June to October.....	16 6 0	11 14 0	9 16 0	8 18 0



Church Square, Pretoria.



Polana Beach, Lourenco Marques.



City Hall, Pietermaritzburg.





In the Drakensberg National Park.

### TOUR C.

JOHANNESBURG TO LOURENCO MARQUES WITH ONE DAY AT PRETORIA AND TWO-DAY MOTOR DRIVE IN THE KRUGER NATIONAL PARK EN ROUTE.

Day.	Time.	Itinerary.
1st day	8.05 a.m.	DEPART JOHANNESBURG.
	9.20 a.m.	ARRIVE PRETORIA.
	9.45 p.m.	Continue journey.
2nd „	7.19 a.m.	ARRIVE NELSPRUIT. Two-day motor drive in the Game Reserve.
4th „	6.52 a.m.	Entrain for Lourenco Marques.
	11.35 a.m.	ARRIVE LOURENCO MARQUES.

Inclusive cost for parties of :

	One.	Two (each).	Three (each).	Four (each).
November to May.....	£ 17 8 0	£ 12 16 0	£ 11 1 0	£ 10 8 0
June to October.....	£ 18 3 0	£ 13 11 0	£ 11 13 0	£ 10 15 0

### TOUR D.

JOHANNESBURG TO NATAL NATIONAL PARK (DRAKENSBERG AREA) AND RETURN.

Day.	Time.	Itinerary.
1st day	8.40 p.m.	DEPART JOHANNESBURG.
2nd „	2.10 p.m.	ARRIVE NATIONAL PARK. Stay six days.
7th „	2.30 p.m.	Depart National Park by road motor bus for Lady-smith and entrain for Johannesburg.
8th „	9.08 a.m.	ARRIVE JOHANNESBURG.

Inclusive cost for parties of :

One.	Four or more (each).
£ 10 11 0	£ 9 4 0



The Sea-Front at Durban.

## TOUR E.

---

JOHANNESBURG TO DURBAN, WITH THREE DAYS AT THE NATAL NATIONAL PARK AND ONE DAY AT PIETERMARITZBURG.

---

<i>Day.</i>	<i>Time.</i>	<i>Itinerary.</i>
1st day	8.40 p.m.	DEPART JOHANNESBURG.
2nd „	2.10 p.m.	ARRIVE NATIONAL PARK. At the park.
4th „	2.30 p.m.	
	6.29 p.m.	ARRIVE LADYSMITH.
5th „	9.54 a.m.	Entrain for Pietermaritzburg.
	2.45 p.m.	ARRIVE PIETERMARITZBURG.
6th „	2.55 p.m.	Entrain for Durban.
	5.50 p.m.	ARRIVE DURBAN.

---

Inclusive cost per person..... £9. 0s. 0d.



Rail and Road Bridge, Victoria Falls.

## TOUR F.

### JOHANNESBURG TO BULAWAYO, VICTORIA FALLS AND RETURN TO JOHANNESBURG.

<i>Day.</i>	<i>Time.</i>	<i>Itinerary.</i>
1st day	9.00 p.m.	DEPART JOHANNESBURG.
2nd ,,		En route.
3rd ,,	7.30 a.m.	ARRIVE BULAWAYO. Motor drive to Matopos, visiting Rhodes' tomb. Entrain for Victoria Falls.
4th ,,	5.45 p.m.	ARRIVE VICTORIA FALLS. At Victoria Falls. Entrain for Johannesburg.
5th ,,	6.30 a.m.	
6th ,,	8.40 p.m.	
7th ,,	8.15 a.m. 12.50 p.m.	ARRIVE BULAWAYO. Continue journey.
8th ,,	5.30 p.m.	ARRIVE JOHANNESBURG.

#### Inclusive cost for parties of :

	<i>One.</i>	<i>Two (each).</i>	<i>Three (each).</i>	<i>Four (each).</i>
	£ s. d.	£ s. d.	£ s. d.	£ s. d.
September to May.....	20 3 0	18 12 0	18 2 0	17 17 0

From June to August fare increased by £5. 6s. 2d.



Conical Tower, Zimbabwe Ruins.

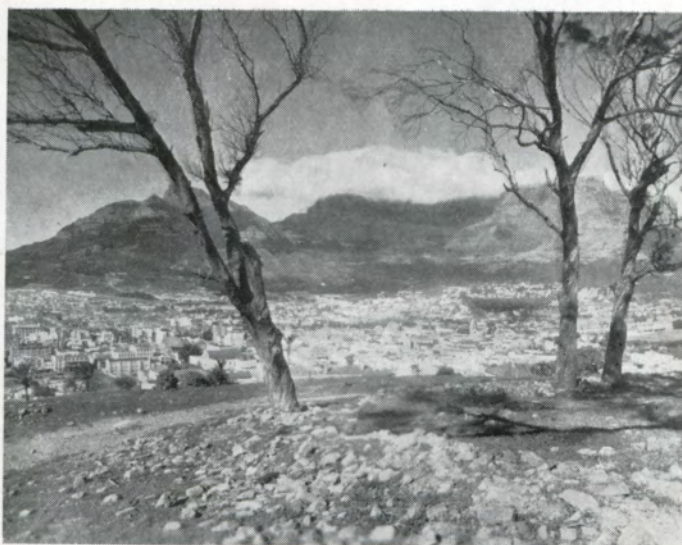
### TOUR G.

JOHANNESBURG TO BULAWAYO, VICTORIA FALLS, FORT VICTORIA (FOR ZIMBABWE RUINS) AND RETURN TO JOHANNESBURG.

Day.	Time.	Itinerary.
1st day	9.00 p.m.	DEPART JOHANNESBURG.
2nd "		En route.
3rd "	7.30 a.m.	ARRIVE BULAWAYO.
		Motor drive to Matopos, Visiting Cecil Rhodes' tomb.
	5.45 p.m.	Entrain for Victoria Falls.
4th "	6.30 a.m.	ARRIVE VICTORIA FALLS.
5th "		At Victoria Falls.
6th "	8.40 p.m.	Entrain for Fort Victoria.
7th "	8.15 a.m.	ARRIVE BULAWAYO.
	1.30 p.m.	Continue journey.
8th "	5.45 a.m.	ARRIVE FORT VICTORIA.
		Motor to hotel at Zimbabwe Ruins.
	8.30 p.m.	Day at the Ruins.
	11.40 a.m.	Entrain for Bulawayo.
9th "		ARRIVE BULAWAYO.
		At Bulawayo.
10th "	6.20 p.m.	Entrain for Johannesburg.
11th "		En route.
12th "	4.10 a.m.	ARRIVE JOHANNESBURG.

Inclusive cost for parties of :

	One.	Two (each).	Three (each).	Four (each).
	£ s. d.	£ s. d.	£ s. d.	£ s. d.
September to May .....	27 12 0	25 11 0	25 1 0	24 16 0
From June to August fare increased by	£5. 18s. 11d.			



Capetown and Table Mountain.

## TOUR H.

---

### JOHANNESBURG TO VICTORIA FALLS, BULAWAYO, KIMBERLEY AND CAPETOWN.

---

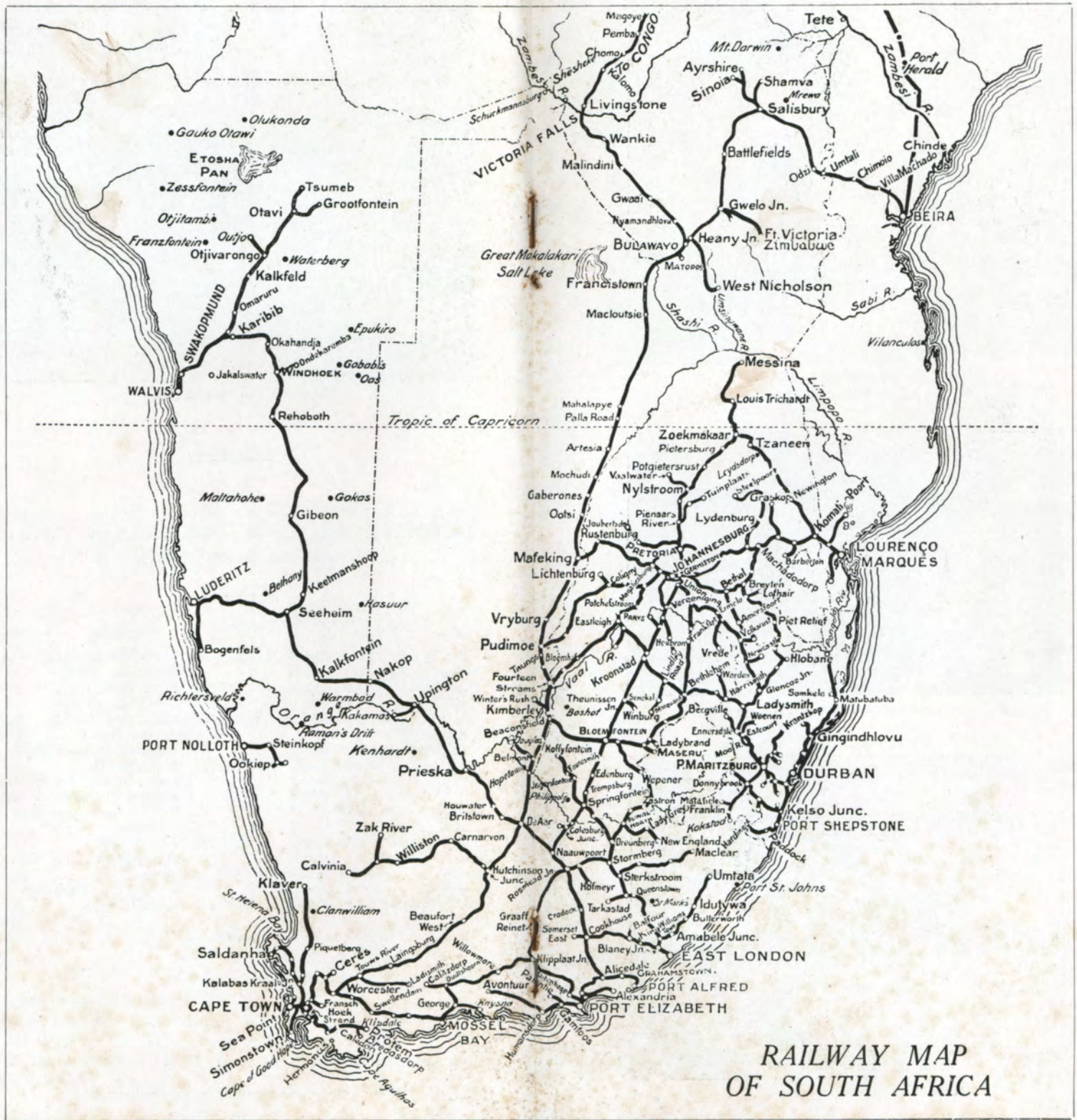
Day.	Time.	Itinerary.
1st day	9.00 p.m.	DEPART JOHANNESBURG.
2nd "		En route.
3rd "	7.30 a.m.	ARRIVE BULAWAYO.
	9.45 a.m.	Continue journey.
	8.30 p.m.	ARRIVE VICTORIA FALLS.
4th "	}	At the Falls.
5th "		Entrain for Bulawayo.
6th "	6.30 a.m.	ARRIVE BULAWAYO.
		Motor drive to Matopos, visiting Cecil Rhodes' tomb.
	6.20 p.m.	Entrain for Kimberley.
7th "		En route.
8th "	2.15 a.m.	ARRIVE KIMBERLEY.
		Motor drive round diamond mines.
9th "	9.25 a.m.	Entrain for Capetown.
10th "	9.31 a.m.	ARRIVE CAPETOWN.

---

#### Inclusive cost for parties of :

	One.	Two (each).	Three (each).	Four (each).
	£ s. d.	£ s. d.	£ s. d.	£ s. d.
September to May.....	29 10 0	26 16 0	25 18 0	25 9 0

From June to August fare increased by £4. 6s. 9d.



**RAILWAY MAP  
OF SOUTH AFRICA**



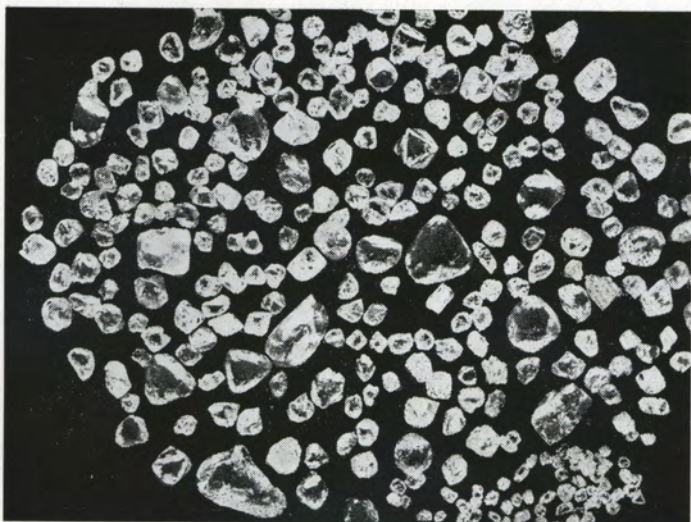
Curio Sellers in the Kalahari.



Rhodes's Grave, Matopos, Rhodesia.



Muizenberg Beach, Cape Peninsula.



Diamonds at Kimberley.

### TOUR I.

JOHANNESBURG TO BULAWAYO, VICTORIA FALLS,  
FORT VICTORIA (FOR ZIMBABWE RUINS), BULAWAYO  
AND CAPETOWN.

Day.	Time.	Itinerary.
1st day	9.00 p.m.	DEPART JOHANNESBURG.
2nd "		En route.
3rd "	7.30 a.m.	ARRIVE BULAWAYO.
		Motor drive to Matopos, visiting Rhodes' tomb.
4th "	5.45 p.m.	ARRIVE VICTORIA FALLS.
5th "	6.30 a.m.	
6th "	8.40 p.m.	Entrain for Fort Victoria.
7th "	8.15 a.m.	ARRIVE BULAWAYO.
	1.30 p.m.	Continue journey.
8th "	5.45 a.m.	ARRIVE FORT VICTORIA.
		Motor to hotel at Zimbabwe Ruins.
	8.30 p.m.	Day at the Ruins.
9th "	11.40 a.m.	Entrain for Bulawayo.
		ARRIVE BULAWAYO.
10th "	6.20 p.m.	At Bulawayo.
11th "		Entrain for Capetown.
12th "		En route.
13th "	6.40 a.m.	ARRIVE CAPETOWN.

#### Inclusive cost for parties of :

	One.	Two (each).	Three (each).	Four (each).
	£ s. d.	£ s. d.	£ s. d.	£ s. d.
September to May.....	34 10 0	32 9 0	31 19 0	31 14 0

From June to August fare increased by £4. 19s. 6d.





The Raadzaal, Bloemfontein.

## TOUR J.

JOHANNESBURG TO VICTORIA FALLS, BULAWAYO,  
KIMBERLEY, BLOEMFONTEIN, PIETERMARITZBURG  
AND DURBAN.

Day.	Time.	Itinerary.
1st day	9.00 p.m.	DEPART JOHANNESBURG.
2nd "		En route.
3rd "	7.30 a.m.	ARRIVE BULAWAYO.
	9.45 a.m.	Continue journey.
	8.30 p.m.	ARRIVE VICTORIA FALLS.
4th "		At the Falls.
5th "	3.35 p.m.	Entrain for Bulawayo.
6th "	6.30 a.m.	ARRIVE BULAWAYO.
		Motor drive to Matopos, visiting Rhodes' tomb.
	6.20 p.m.	Entrain for Kimberley.
7th "		En route.
8th "	2.15 a.m.	ARRIVE KIMBERLEY.
		Motor drive round diamond mines.
9th "	7.00 a.m.	Entrain for Bloemfontein.
	9.51 a.m.	ARRIVE BLOEMFONTEIN.
10th "	8.20 a.m.	Entrain for Pietermaritz- burg.
11th "	3.43 a.m.	ARRIVE PIETERMARITZBURG.
	1.45 p.m.	Leave Pietermaritzburg by road motor bus.
	4.27 p.m.	ARRIVE DURBAN.

### Inclusive cost for parties of :

	One.	Two (each).	Three (each).	Four (each).
	£ s. d.	£ s. d.	£ s. d.	£ s. d.
September to May.....	31 3 0	28 10 0	27 12 0	27 4 0
From June to August fare increased by £4. 6s. 9d.				



In the Cango Caves.

## TOUR K.

JOHANNESBURG TO NATAL NATIONAL PARK,  
BLOEMFONTEIN, OUDTSHOORN (FOR CANGO  
CAVES), KNYSNA AND CAPETOWN.

Day.	Time.	Itinerary.
1st day	8.40 p.m.	DEPART JOHANNESBURG.
2nd "	2.10 p.m.	ARRIVE NATIONAL PARK.
3rd "		At the Park.
4th "	2.30 p.m.	Leave National Park by road motor bus for Ladysmith.
5th "	5.47 a.m.	Entrain for Bloemfontein.
8th "	7.38 p.m.	ARRIVE BLOEMFONTEIN.
9th "	7.15 a.m.	Entrain for Oudtshoorn.
9th "	11.53 a.m.	ARRIVE OUDTSHOORN.
10th "	8.00 a.m.	Motor drive to Cango Caves.
		Motor from Oudtshoorn to Knysna, via Montagu Pass, George, and Wilderness.
11th "		ARRIVE KNYSNA.
		Morning free.
11th "	2.00 p.m.	Motor to Keurbooms River via Main Forest, Paardekop, and return via Plettenberg Bay.
12th "		Motor to Knysna Heads.
		Entrain for Capetown.
13th "	1.00 p.m.	ARRIVE CAPETOWN.
13th "	11.12 a.m.	

### Inclusive cost for parties of :

One.	Two (each).	Three (each).	Four (each).
£41 14 0	£32 2 0	£28 19 0	£27 8 0



Kaaiman's River.



On the Road to George.



Keurboom's River.



The Wilderness.

## TOUR L.

JOHANNESBURG TO OUDTSHOORN (FOR CANGO CAVES), KNYSNA, WILDERNESS AND CAPETOWN.

Day.	Time.	Itinerary.
1st day	7.45 p.m.	DEPART JOHANNESBURG.
2nd „		En route.
3rd „	11.53 a.m.	ARRIVE OUDTSHOORN. Afternoon free.
4th „		Motor to Cango Caves.
5th „	12.09 p.m. 5.55 p.m.	Entrain for Knysna. ARRIVE KNYSNA.
6th „	9.00 a.m.	Motor drive to Keurbooms River via Main Forest, Paardekop and return via Plettenberg Bay.
7th „	9.00 a.m. 10.29 a.m.	Entrain for Wilderness. ARRIVE WILDERNESS. Stay two days.
9th „	10.15 a.m. 11.00 a.m. 3.32 p.m.	Entrain for Capetown. ARRIVE GEORGE. Continue journey.
10th „	11.12 a.m.	ARRIVE CAPETOWN.

Inclusive cost for parties of :

One.	Two (each).	Three (each).	Four (each).
£25 8 0	£21 5 0	£20 0 0	£19 7 0



Humewood Beach, Port Elizabeth.

## TOUR M.

JOHANNESBURG TO EAST LONDON, PORT ELIZABETH, OUDTSHOORN (FOR CANGO CAVES), KNYSNA, WILDERNESS AND CAPETOWN.

Day.	Time.	Itinerary.
1st day	2.15 p.m.	DEPART JOHANNESBURG.
2nd "	4.35 p.m.	ARRIVE EAST LONDON.
3rd "		At East London.
4th "	1.40 p.m.	Entrain for Port-Elizabeth.
5th "	6.20 a.m.	ARRIVE PORT ELIZABETH.
6th "	8.30 a.m.	At Port Elizabeth.
7th "	7.40 p.m.	Entrain for Oudtshoorn.
		ARRIVE OUDTSHOORN.
		Motor drive to Cango Caves.
		Motor drive to Kamanassie Dam.
8th "	12.09 p.m.	Entrain for Knysna.
9th "	7.45 p.m.	ARRIVE KNYSNA.
		Motor drive to Keurbooms River via Main Forest, Paardekop and return via Plettenberg Bay.
10th "	8.15 a.m.	Entrain for Wilderness.
	10.05 a.m.	ARRIVE WILDERNESS.
13th "	2.33 p.m.	At the Wilderness.
14th "	11.12 a.m.	Entrain for Capetown.
		ARRIVE CAPETOWN.

Inclusive cost for parties of :

One.	Two (each).	Three (each).	Four (each).
£33 8 6	£28 9 6	£26 18 6	£26 3 6



One of Bulawayo's Wide Streets.

## TOUR O.

JOHANNESBURG TO BULAWAYO, VICTORIA FALLS,  
BEIRA AND LAKE NYASA, TOUR TERMINATING AT  
BEIRA.

Day.	Time.	Itinerary.
1st day	9.00 p.m.	DEPART JOHANNESBURG.
2nd "		En route.
3rd "	7.30 a.m.	ARRIVE BULAWAYO.
		Drive to Matopos, visiting Cecil Rhodes' tomb.
4th "	5.45 p.m.	ARRIVE VICTORIA FALLS.
	6.30 a.m.	Entrain for Victoria Falls.
6th "	8.40 p.m.	Stay three days.
7th "	8.15 a.m.	Entrain for Salima.
8th "	10.15 a.m.	ARRIVE BULAWAYO.
	5.30 p.m.	Continue journey.
9th "	7.00 p.m.	ARRIVE BEIRA.
	5.43 p.m.	Continue journey.
10th "	10.00 p.m.	ARRIVE BLANTYRE.
	8.12 a.m.	Continue journey.
17th "	7.15 p.m.	ARRIVE SALIMA.
18th "		Motor to hotel at the lake.
19th "	8.22 a.m.	Stay eight days.
		Entrain for Beira.
		En route.
		ARRIVE BEIRA.

**Inclusive cost (during excursion periods only) :**

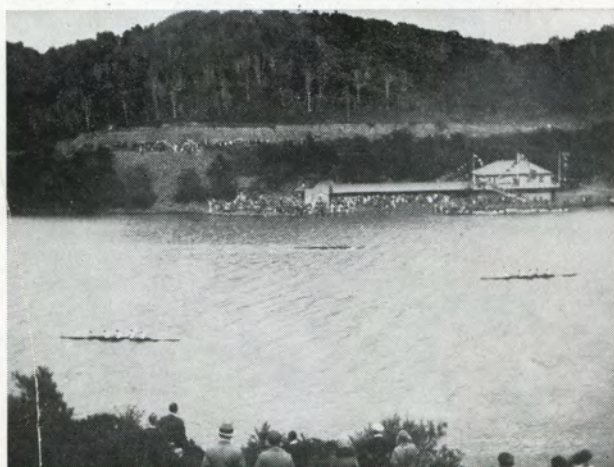
	Per person.
	£ s. d.
First class rail throughout.....	39 10 6
Second class rail to Beira and first class Beira-Salima-Beira.....	34 13 6
Catering services between Beira and Salima excluded.	



Orient Beach, East London.



At a Native Kraal.



On the Buffalo River.



Sixth Avenue, Nairobi.

### TOUR P.

JOHANNESBURG TO DURBAN, MOMBASA, ROUND LAKE VICTORIA, MOMBASA, DURBAN, AND RETURN TO JOHANNESBURG.

Day.	Time.	Itinerary.
1st day	3.20 p.m.	DEPART JOHANNESBURG.
2nd "	9.25 a.m.	ARRIVE DURBAN.
3rd "	8.00 p.m.	At Durban. Embark on B.I. vessel for Mombasa.
12th "		ARRIVE KILINDINI HARBOUR.
14th "	4.00 p.m.	Entrain for Kisumu.
15th "	9.20 a.m.	ARRIVE NAIROBI.
	7.30 p.m.	Continue journey.
16th "	6.00 p.m.	ARRIVE KISUMU PIER.
	8.00 p.m.	Leave Kisumu Pier by boat on trip, lasting six days, round Lake Victoria.
21st "	9.00 a.m.	ARRIVE KISUMU PIER.
	1.35 p.m.	Entrain for Mombasa.
22nd "		En route.
23rd "	8.20 a.m.	ARRIVE MOMBASA.
		Motor to Kilindini Harbour and embark on B.I. vessel for Durban.
34th "		ARRIVE DURBAN.
	2.30 p.m.	Entrain for Johannesburg.
35th "	9.08 a.m.	ARRIVE JOHANNESBURG.

**Inclusive cost (during excursion periods only) :**

	Per person.
	£ s. d.
First class rail and steamer .....	66 3 0
First class rail and first class lower on boat	58 3 0
Second class rail on S.A.R., second class on boat and first class on Kenya and Uganda Railways .....	53 15 0
Catering between Nakuru and Kisumu excluded.	



## SOUTH AFRICAN AIRWAYS.

### TIME-TABLE

SUBJECT TO ALTERATION WITHOUT NOTICE.

#### JOHANNESBURG—DURBAN.

Rand Airport.....	Dep.	8.00 a.m.	Tues., Wed., Fri. Sat.
		6.30 a.m.	<del>Mon., Thurs.</del> Sun., Thurs.
Stamford Hill.....	Arr.	10.00 a.m.	and 8.30 a.m. respectively.

---

Stamford Hill.....	Dep.	3.00 p.m.	Weekdays.
Rand Airport.....	Arr.	5.00 p.m.	,,

---

#### DURBAN—CAPETOWN.

Stamford Hill.....	Dep.	9.15 a.m.	<del>Mon., Thurs.</del> Sun., Thurs.
East London.....	Dep.	11.30 a.m.	,,
Port Elizabeth.....	Dep.	1.45 p.m.	,,
Wingfield.....	Arr.	5.00 p.m.	,,

---

Wingfield.....	Dep.	7.00 a.m.	Mon., Thurs.
Port Elizabeth.....	Dep.	10.45 a.m.	,,
East London.....	Dep.	12.15 p.m.	,,
Stamford Hill.....	Arr.	2.15 p.m.	,,

---

#### JOHANNESBURG—CAPETOWN.

Rand Airport.....	Dep.	8.30 a.m.	<del>Sat., Wed.</del> Mon., Wed.
Bloemfontein.....	Dep.	10.30 a.m.	,,
Kimberley.....	Dep.	12.00 a.m.	,,
Beaufort West.....	Dep.	2.30 p.m.	,,
Wingfield.....	Arr.	4.30 p.m.	,,

---

Wingfield.....	Dep.	8.00 a.m.	Tues., Fri.
Beaufort West.....	Dep.	10.15 a.m.	,,
Kimberley.....	Dep.	1.00 p.m.	,,
Bloemfontein.....	Dep.	2.00 p.m.	,,
Rand Airport.....	Arr.	3.45 p.m.	,,

---

#### KIMBERLEY—WINDHOEK.

Kimberley.....	Dep.	9.00 a.m.	Thurs.
Upington.....	Dep.	11.45 a.m.	,,
Keetmanshoop.....	Dep.	2.55 p.m.	,,
Mariental.....	Dep.	4.15 p.m.	,,
Windhoek.....	Arr.	6.00 p.m.	,,

---

Windhoek.....	Dep.	7.00 a.m.	Mon.
Mariental.....	Dep.	8.30 a.m.	,,
Keetmanshoop.....	Dep.	10.30 a.m.	,,
Upington.....	Dep.	1.40 p.m.	,,
Kimberley.....	Arr.	3.55 p.m.	,,

---

# I N F O R M A T I O N

—for the guidance of travellers—

All arrangements connected with the foregoing tours in Africa are carried out by the S.A.R. Tourist Department.

All fares are exclusive of gratuities to hotel or other attendants, and personal expenses on such items as wines, spirits, laundry, etc.

Tours can be booked to cover scenic routes in considerable variety, industrial centres, or delightful pleasure resorts.

Passports : Every person desiring to visit any territories beyond the borders of the Union should be in possession of valid passports or permits.



## *Care-free Travel*

Be sure that your holiday provides you with the maximum of pleasure. Entrust your arrangements to the Tourist Branch of the South African Railways.

S.A.R. TOURIST BUREAU  
New Station Buildings, Johannesburg  
3 Bureau Lane, - - - Pretoria

*also at*

CAPETOWN AND DURBAN  
and System Manager, Tourist Section, S.A.R.,  
Bloemfontein, Kimberley, East London, Port Elizabeth,  
Windhoek, and Traffic Agent, Lourenco Marques.